



U.S. WHEAT ASSOCIATES

Dependable People. Reliable Wheat.

World Wheat Supply and Demand Situation

Major data source: USDA World Agricultural Supply and Demand
Estimates released March 9, 2022, unless otherwise indicated.
Projections will change over the course of the year depending on
weather and other developments.

01

Major Exporters

02

Import Demand

03

U.S. Situation by Class

04

Outlook



Highlights of USDA's 2021/22 Wheat S&D Estimates

USDA raises 2021/22 global production by 2.1 MMT to 778.5 MMT

- Production in China is forecast at 136.9 MMT, 3.3 MMT more than the 5-year average
- Production in North Africa is forecast at 21.5 MMT, 3.7 MMT more than the 5-year average
- Australian production is raised 2.3 MMT to 36.3 MMT
- U.S. production is unchanged from last month at 44.79 MMT, down 10% compared to 2020/21

Global consumption forecast at 787.28 MMT, 800,000 MT less than February

- Domestic consumption in India estimated at 103.5 MMT, down 750,000 MT compared to February
- Domestic consumption in North Africa estimated at 47.92 MMT, slightly lower than last month while Middle East consumption was reduced 200,000 TMT from February to 39.6 MMT
- Ukraine is forecast at 9.6 MMT, up 1.0 MMT compared to February
- U.S. domestic consumption forecast at 30.84 MMT, unchanged from last month

World wheat trade adjusted down 3.58 MMT from last month to 203.11 MMT

- Exports from Ukraine are cut 4 MMT from February to 20 MMT and in Russia exports were reduced 3 MMT to 32 MMT
- India's exports are forecast at 8.5 MMT, up 1.5 MMT from February and 5.9 MMT from 2020/21
- Australia's wheat exports are raised 2 MMT to 27.5 MMT, 75% above the 5-year average
- Brazil's exports forecast at 1.7 MMT, a 770,000 MT increase compared to 2020/21
- U.S. 2021/22 exports reduced 280,000 MT to 21.77 MMT, 18% below the 5-year average

Highlights of USDA's 2021/22 Wheat S&D Estimates

World beginning stocks raised 400,000 MT from last month to 290.27 MMT

- Worldwide beginning stocks dropped 6.56 MMT year-over-year. USDA estimated 2020/21 beginning stocks at 296.83 MMT
- China's beginning stocks estimated at 144.12 MMT, down 5.9 MMT from 2020/21
- U.S. 2021/22 beginning stocks of 23.0 MMT are estimated 18% lower than 2020/21

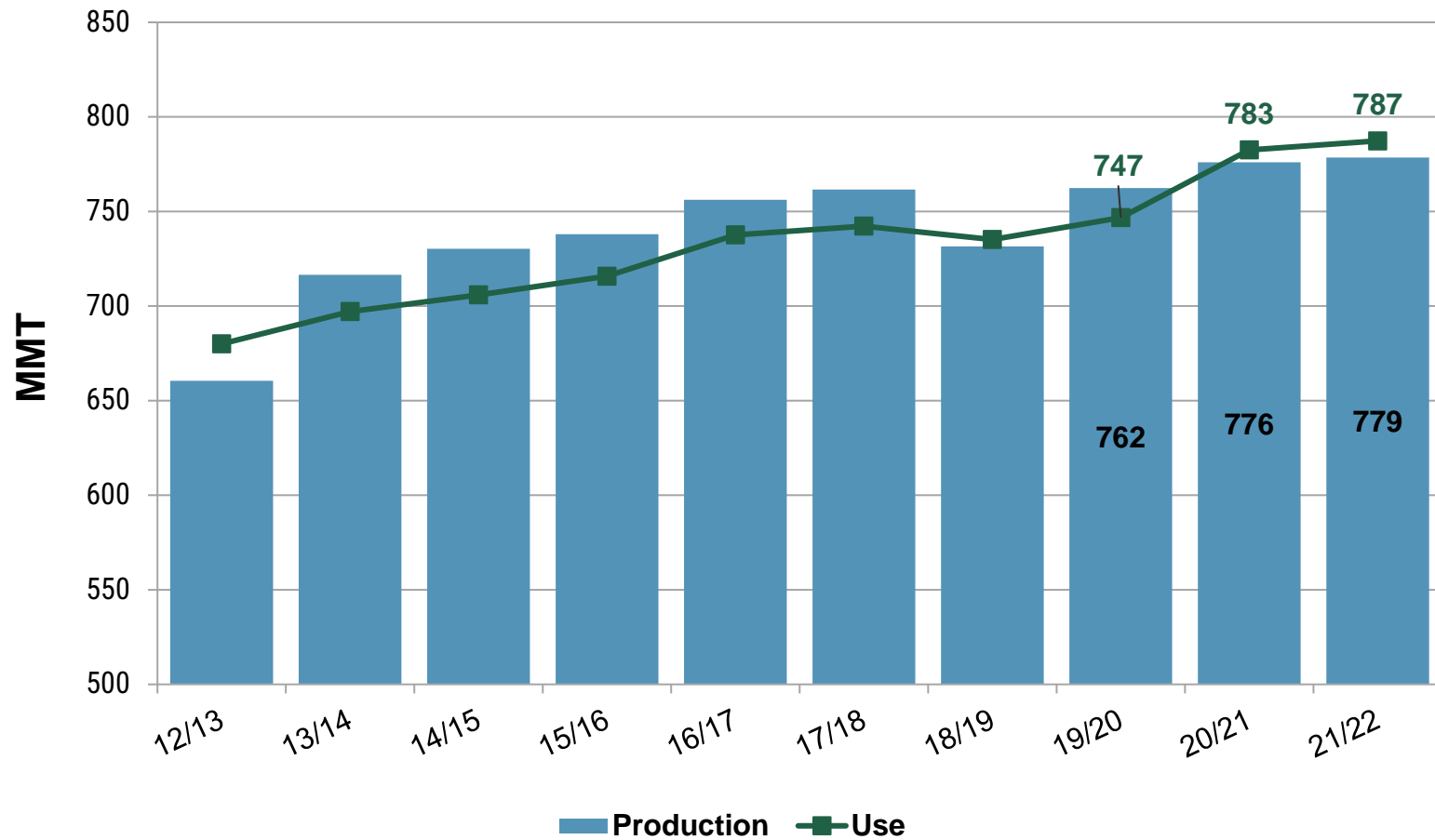
Global ending stocks raised 3.3 MMT from last month to 281.2

- Ukraine's ending stocks raised 3 MMT from February to 5.01 MMT
- Russian ending stocks forecast at 13.09 MMT, 2.46 MMT more than last month
- U.S. ending stocks are raised 140,000 MT to 17.77 MMT, 5.2 MMT less than 2020/21

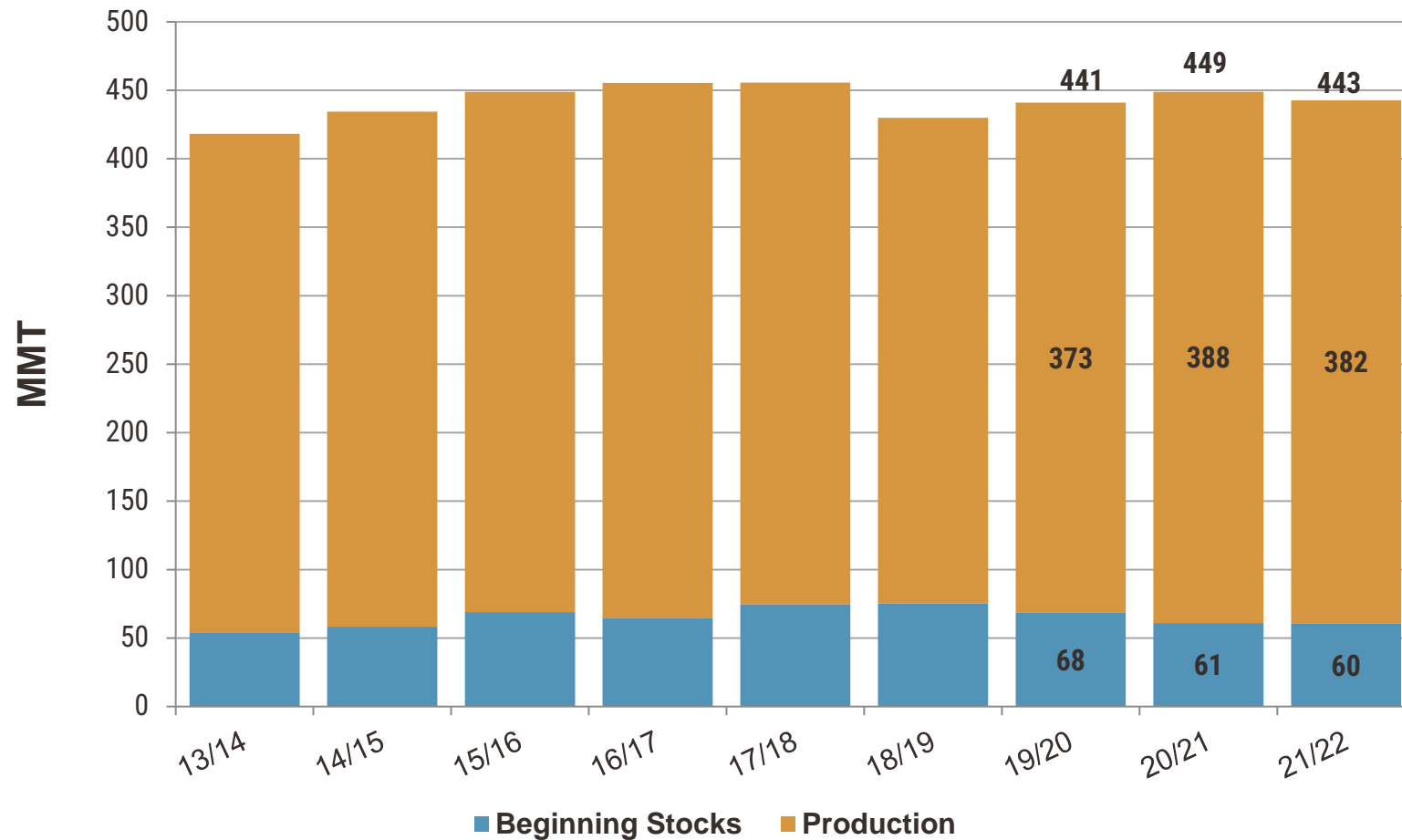
U.S. wheat farm gate price to increase from last year

- The average farm gate price of U.S. wheat in 2021/22 is forecast to increase \$0.20 per bushel to \$7.50/bu (\$275.55/MT)

World Production and Use



Supplies in Top Exporting Countries*



*Includes U.S., Canada, Australia, Argentina, EU, Russia, Ukraine and Kazakhstan

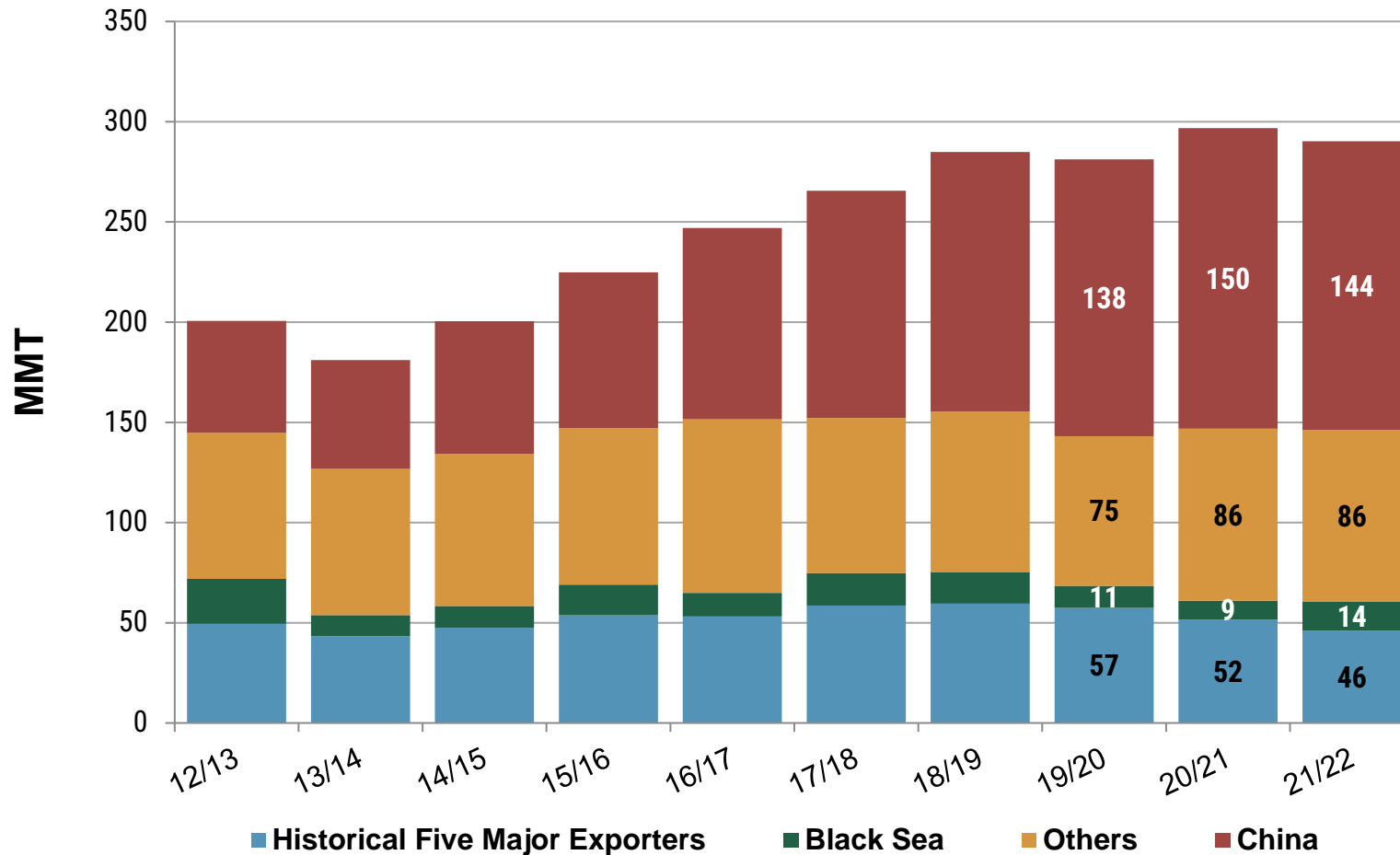


World Wheat Supply and Demand (MMT)

	<u>19/20</u>	<u>20/21</u>	<u>21/22</u>
SUPPLY:			
Beginning Stocks	281	297	290
Production	762	776	779
Supply Total	1044	1073	1069
Ending Stocks	297	290	282
TRADE:			
Exports/Imports	194	203	203
DEMAND:			
Food & Seed	607	625	625
Feed & Residual	140	158	162
Use Total	747	783	787



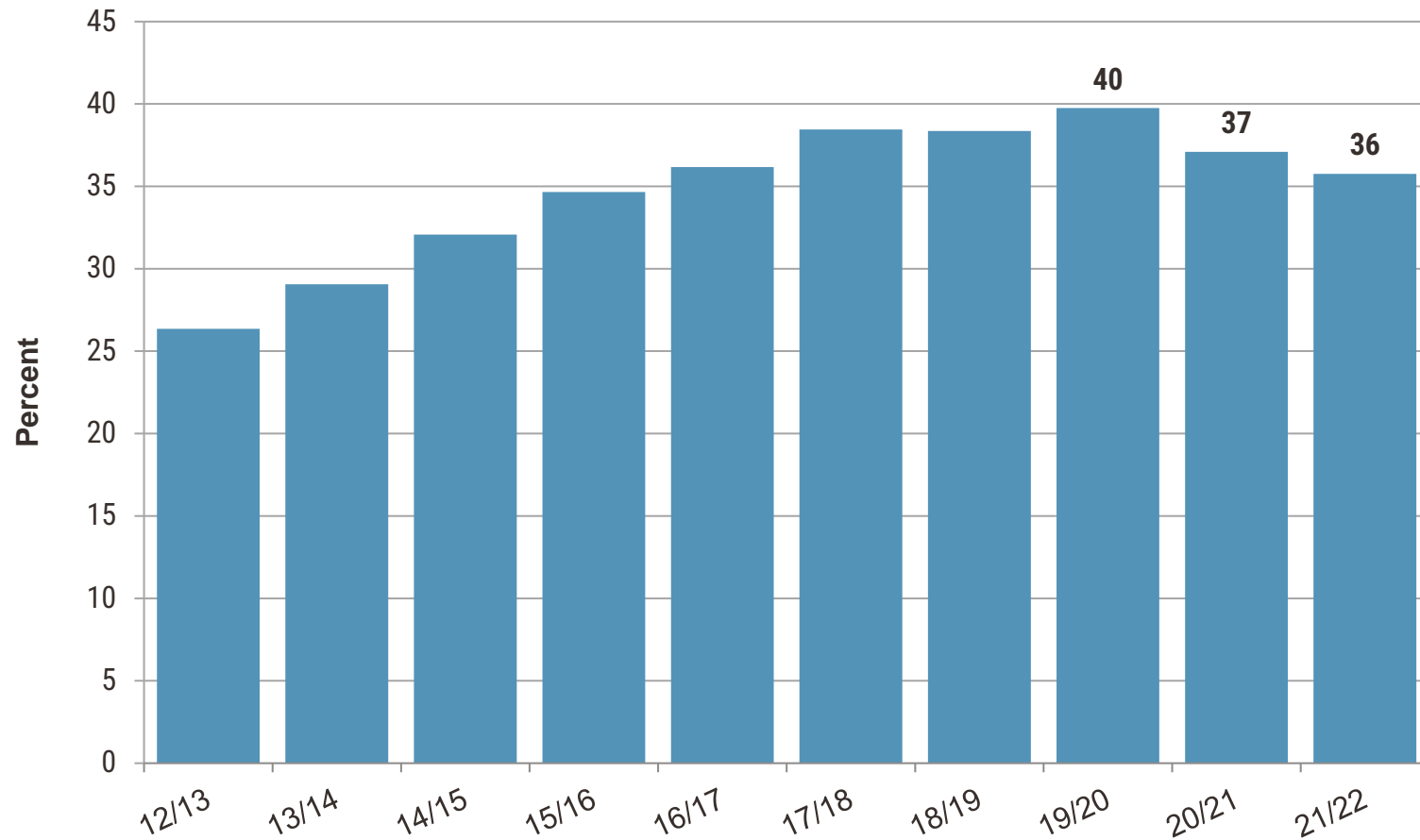
World Beginning Stocks



Historical Five Major Exporters include U.S., Canada, Australia, Argentina and EU. Black Sea includes Russia, Ukraine and Kazakhstan.



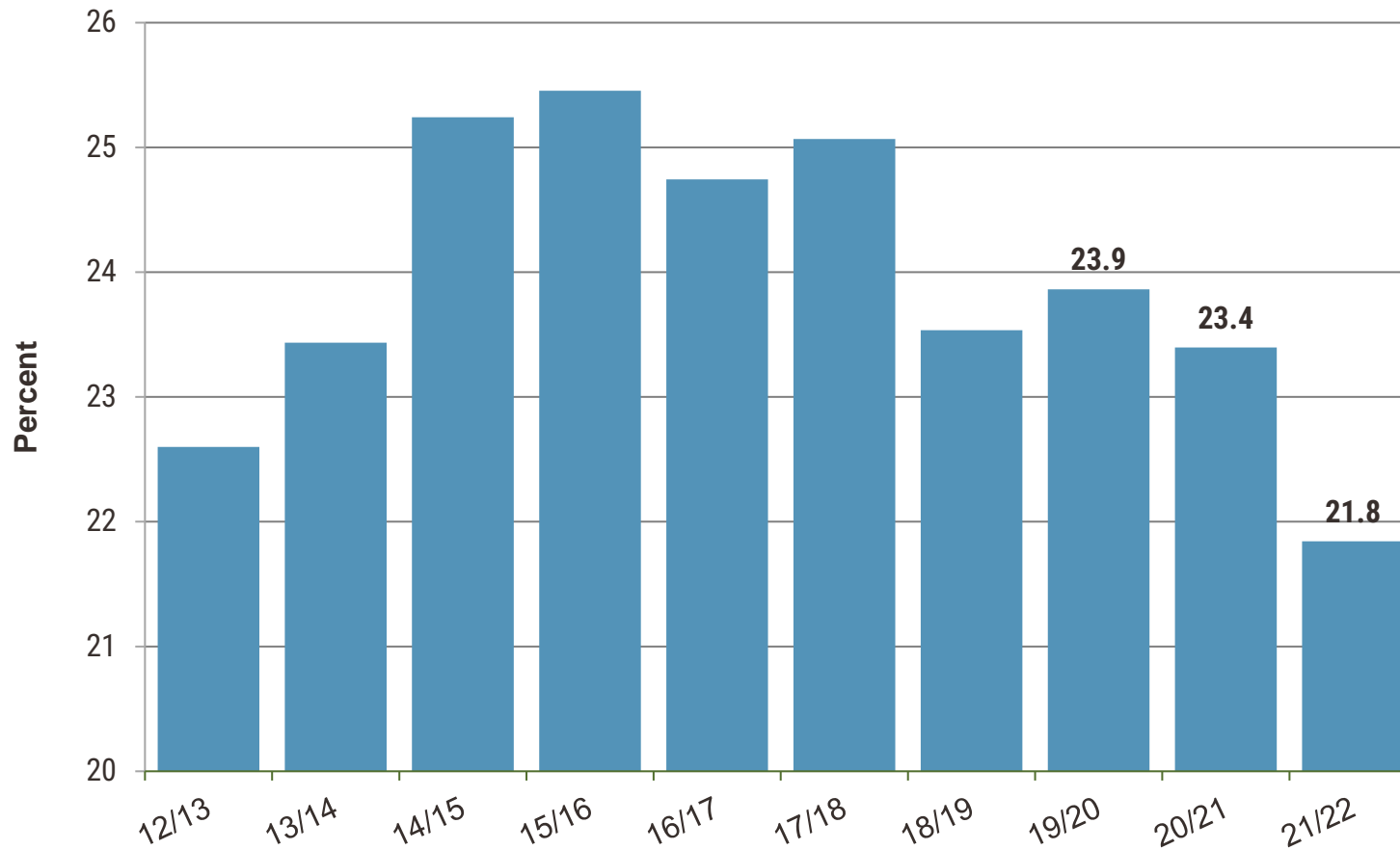
Global Stocks*-to-Use Ratio



*Ending stocks



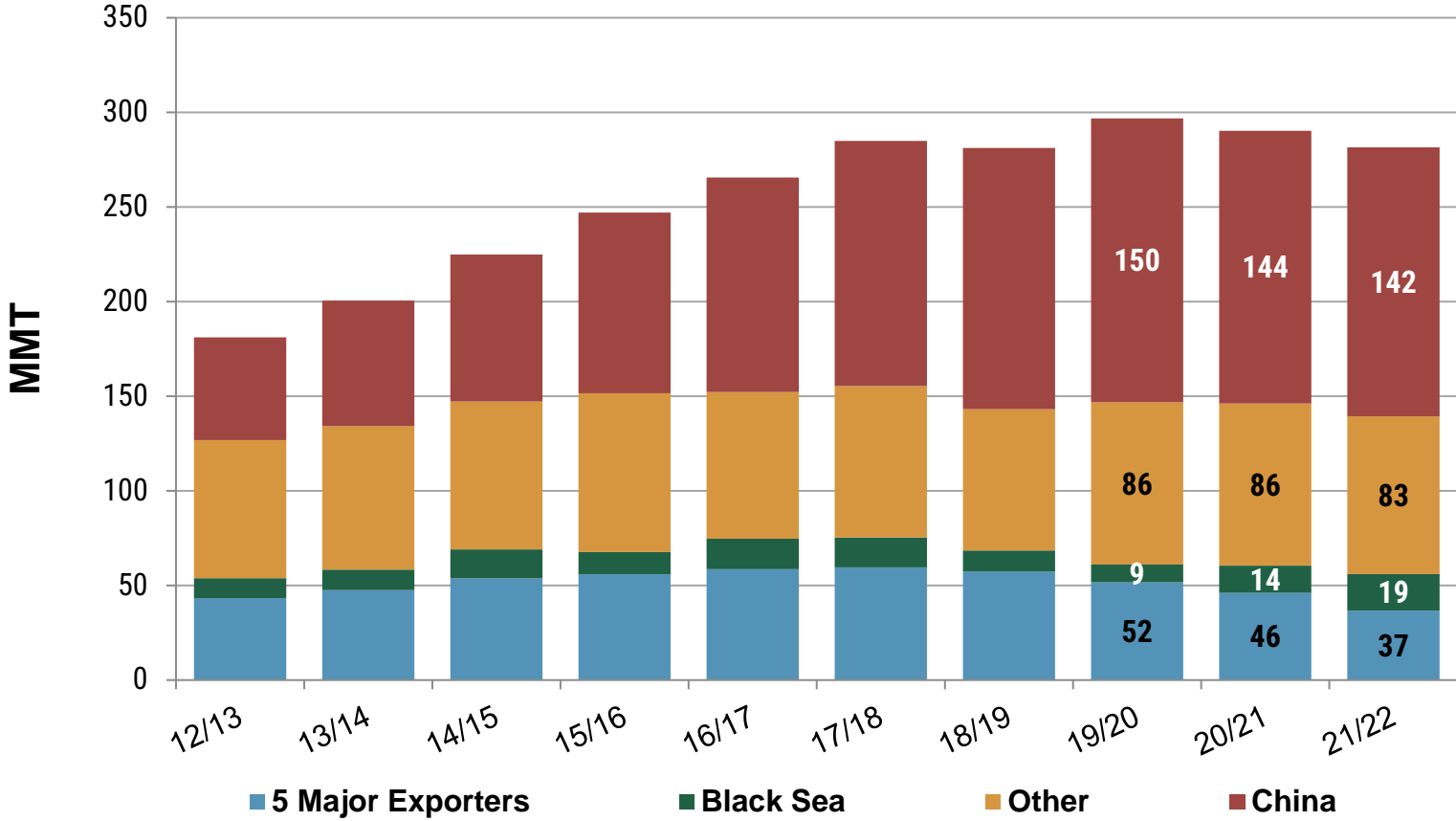
Global Stocks*-to-Use Ratio w/o China



*Ending stocks



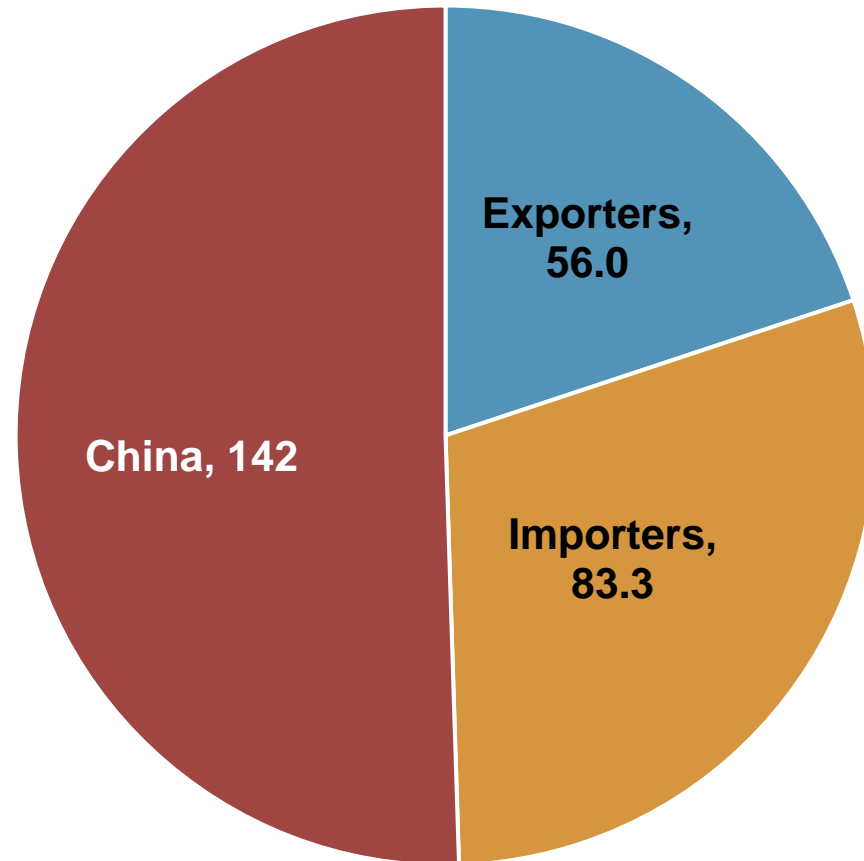
World Ending Stocks



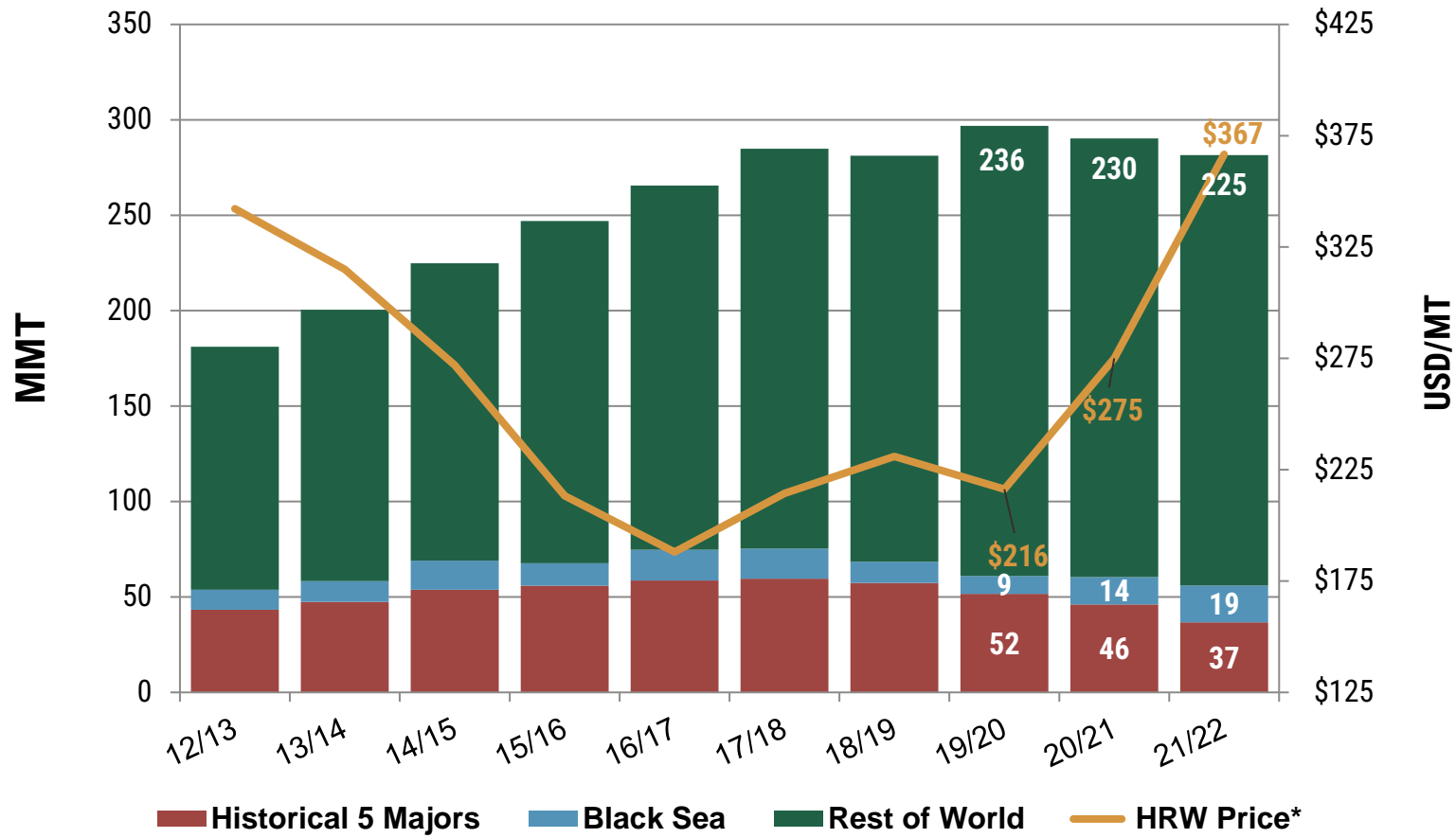
Historical Five Major Exporters include U.S., Canada, Australia, Argentina and EU. Black Sea includes Russia, Ukraine and Kazakhstan.



World Ending Stocks by Position (MMT)



Global Ending Stocks and Price



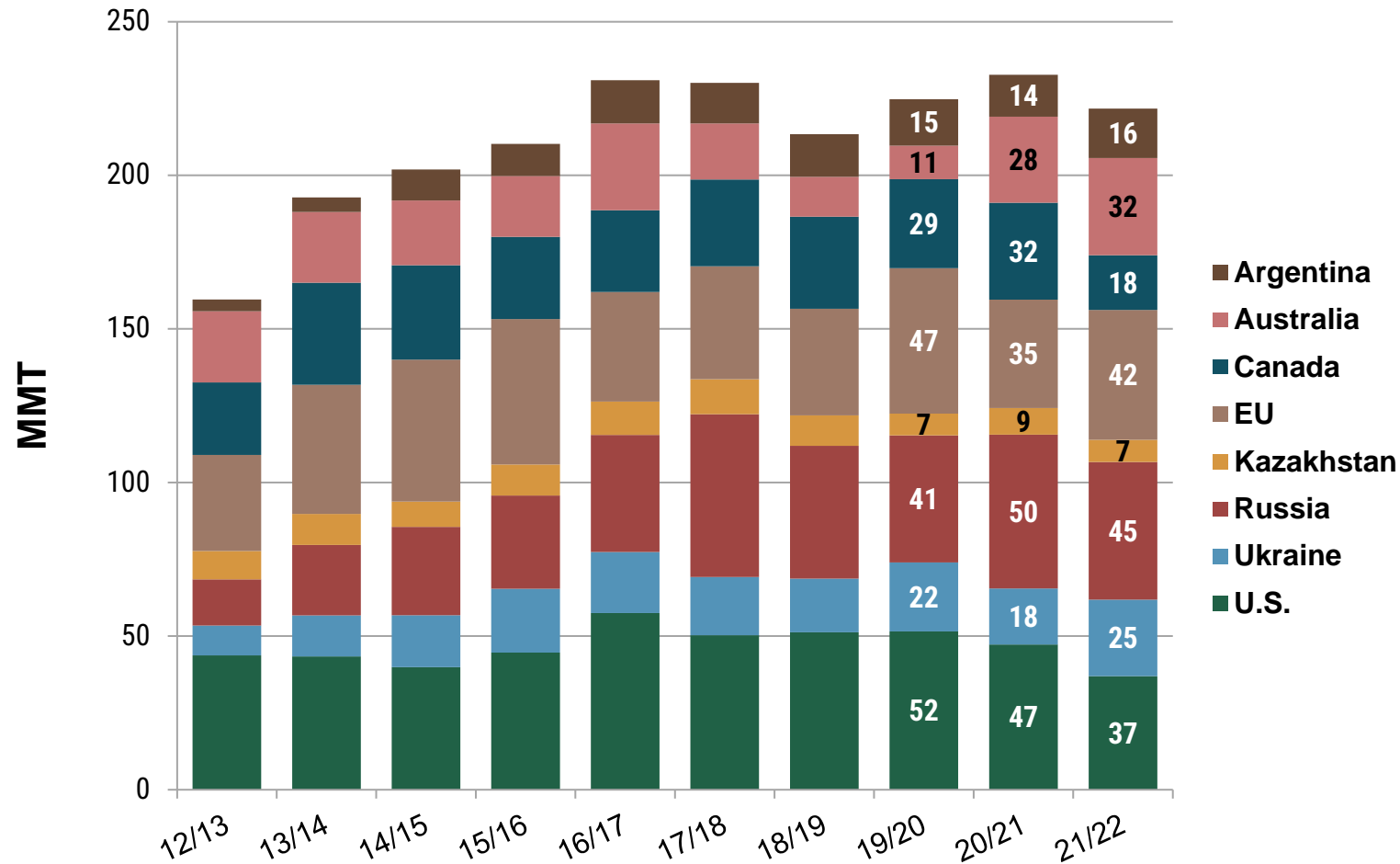
*Source: U.S. Wheat Associates Price Report, March 4, 2022



01

Major Exporters

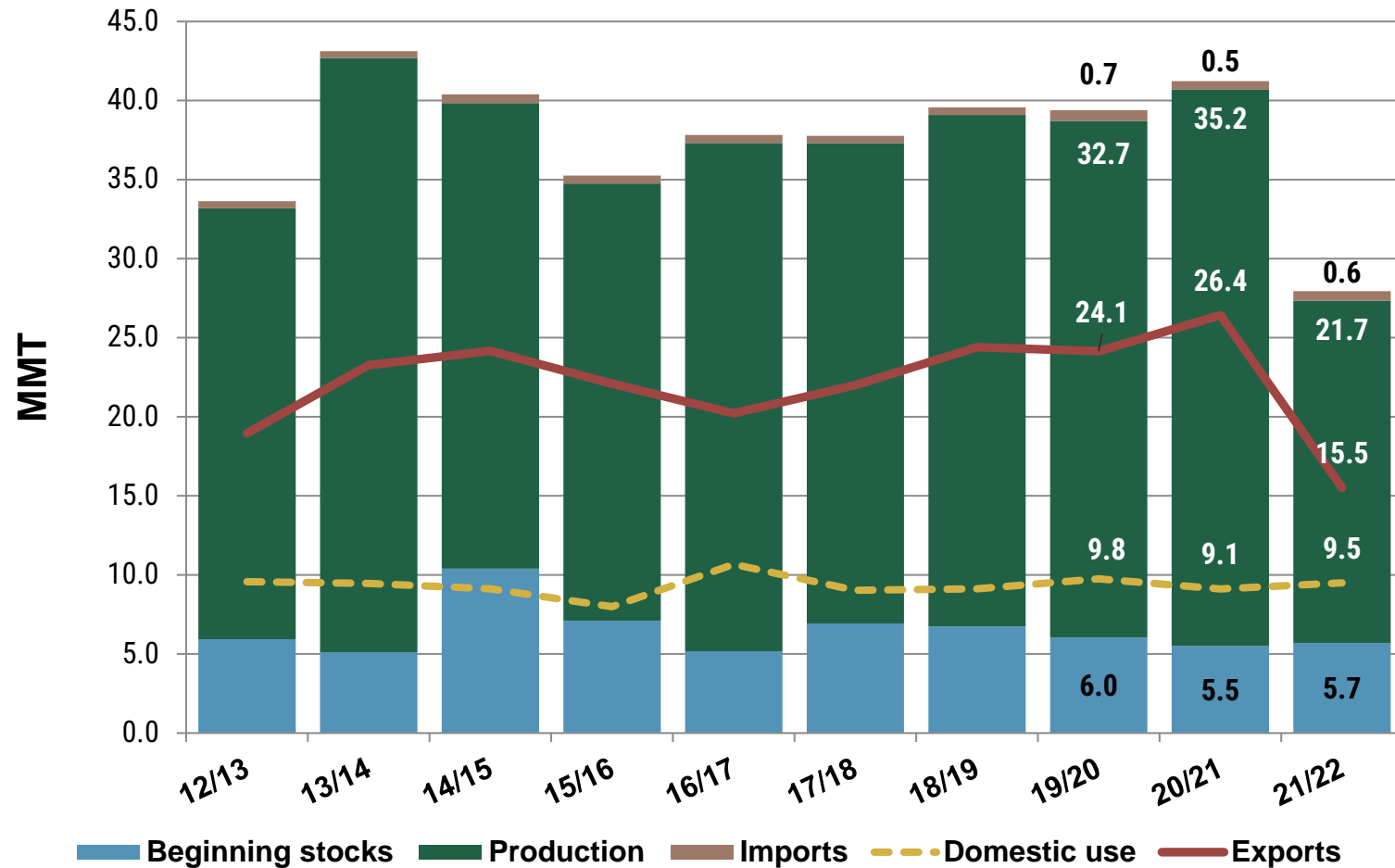
Exportable Supplies in Top Exporting Countries



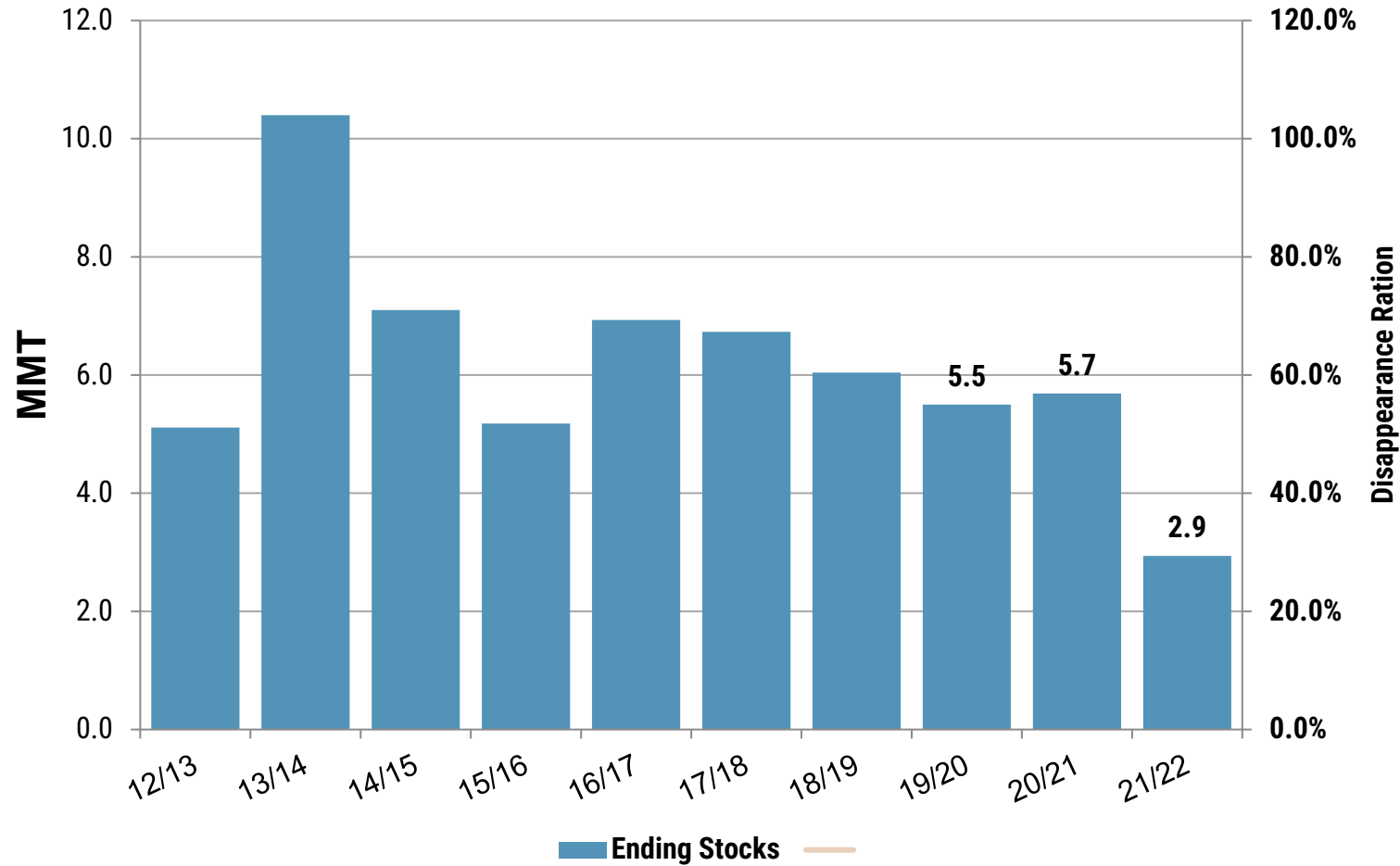
*Exportable Supplies = (Beginning Stocks + Production) – Domestic Consumption



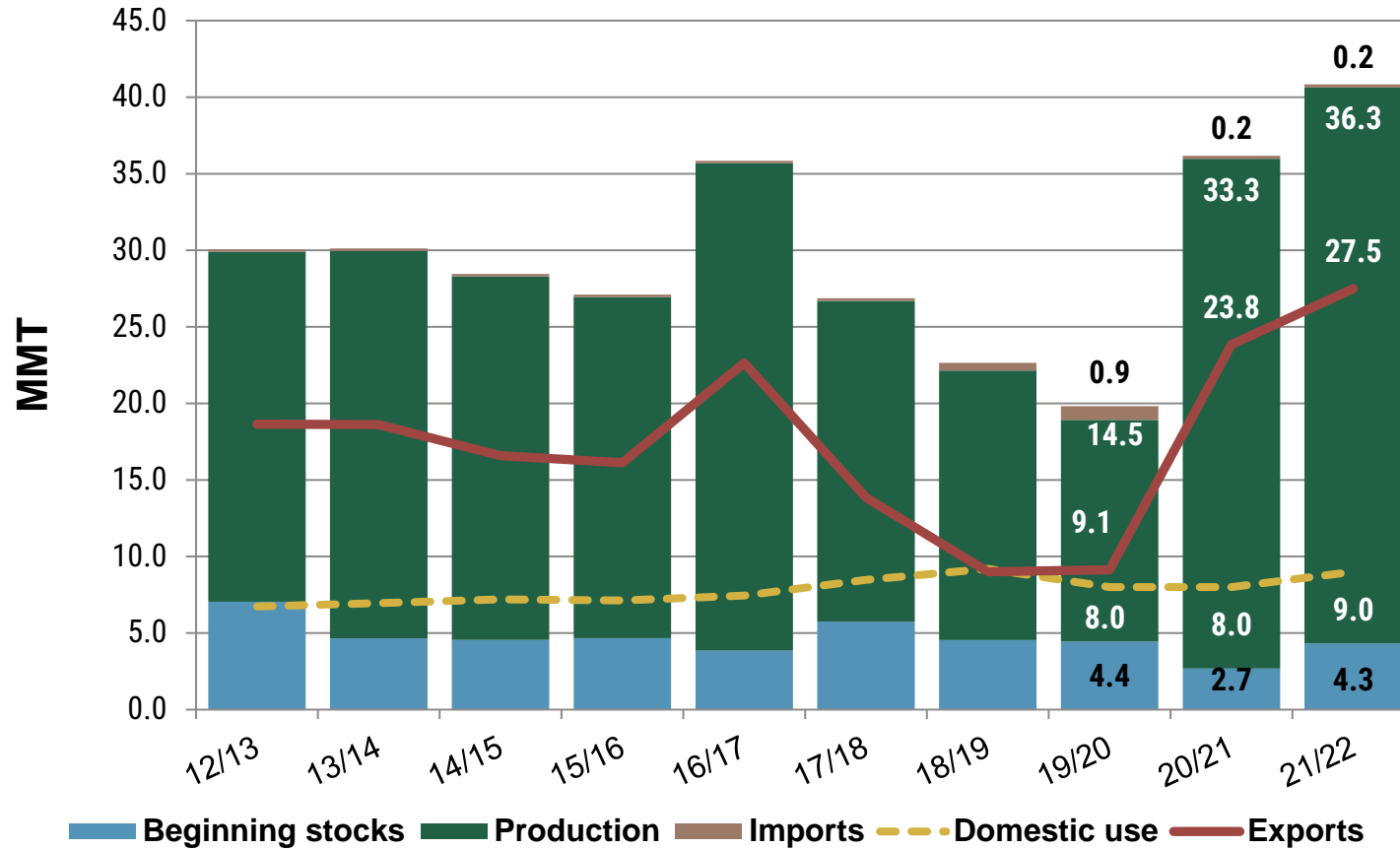
Canada Situation



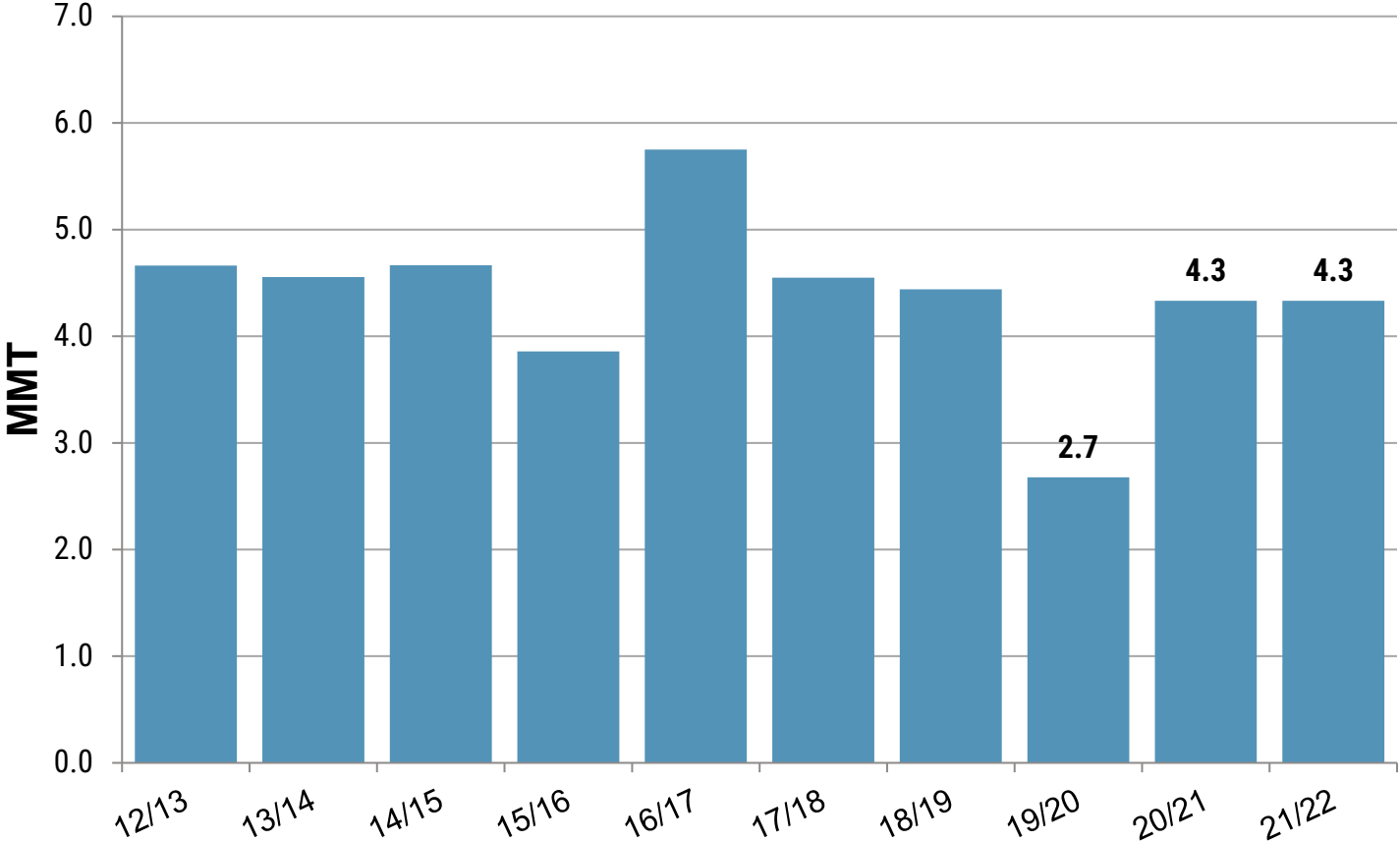
Canada Ending Stocks



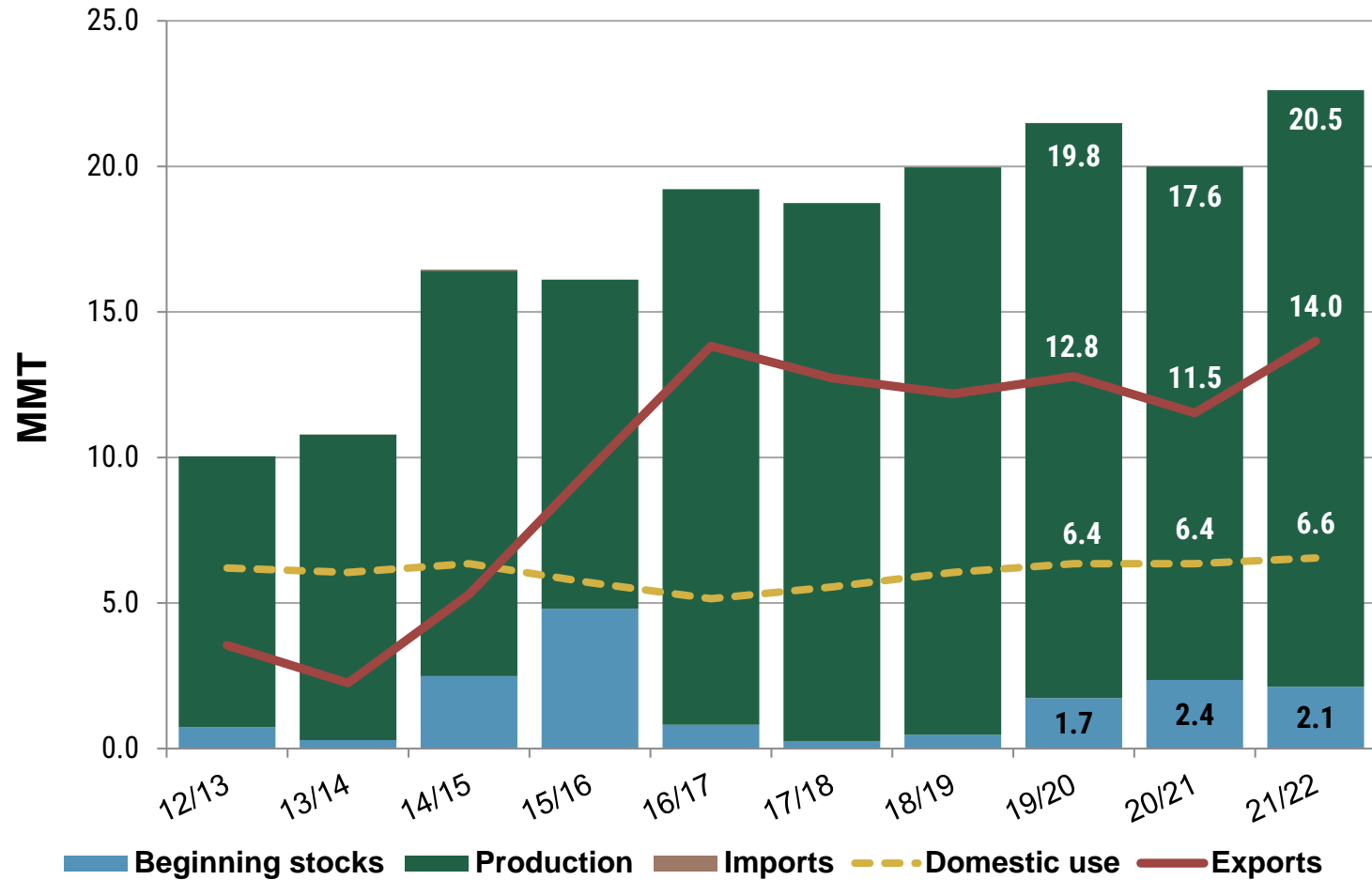
Australia Situation



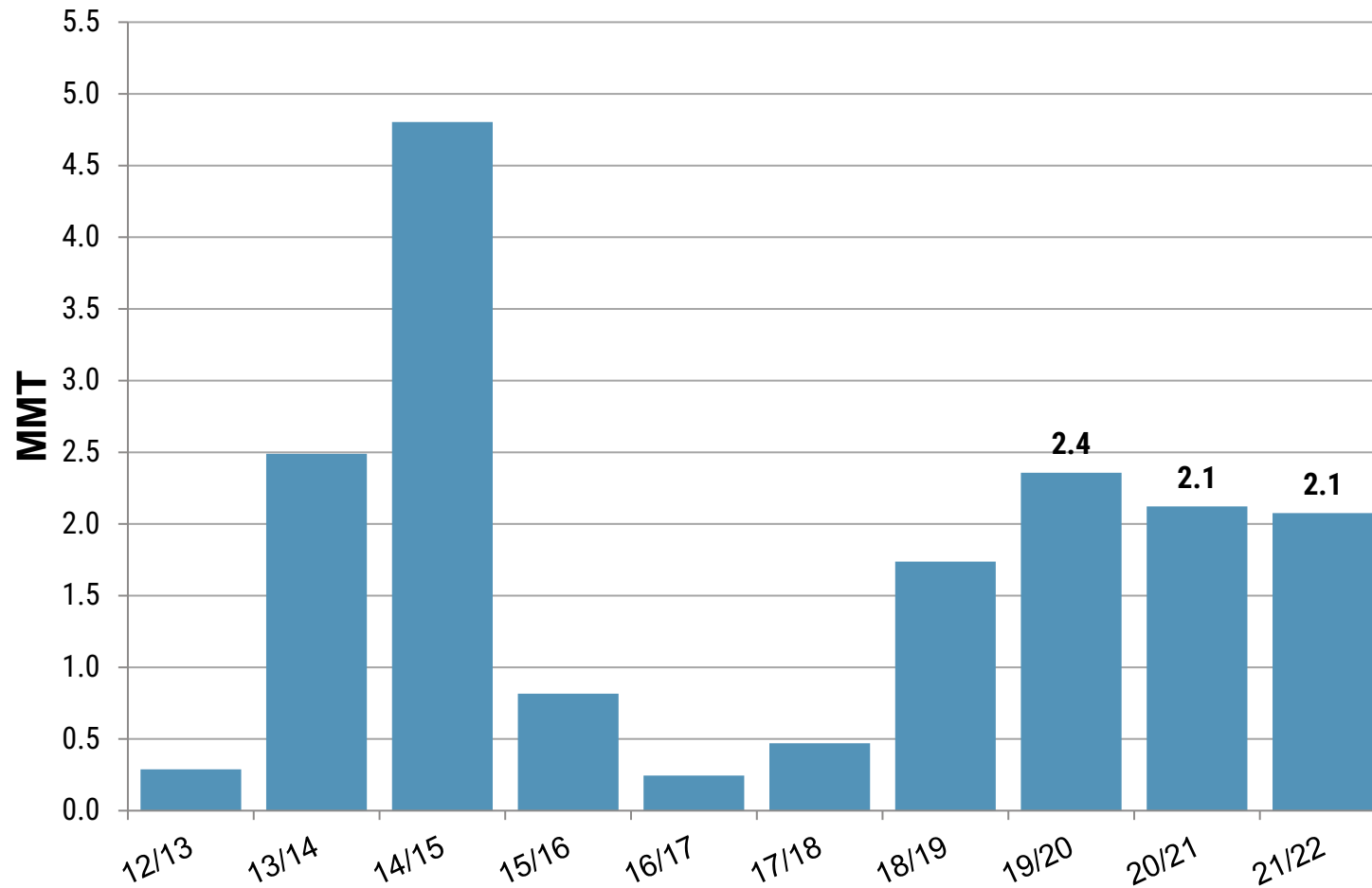
Australia Ending Stocks



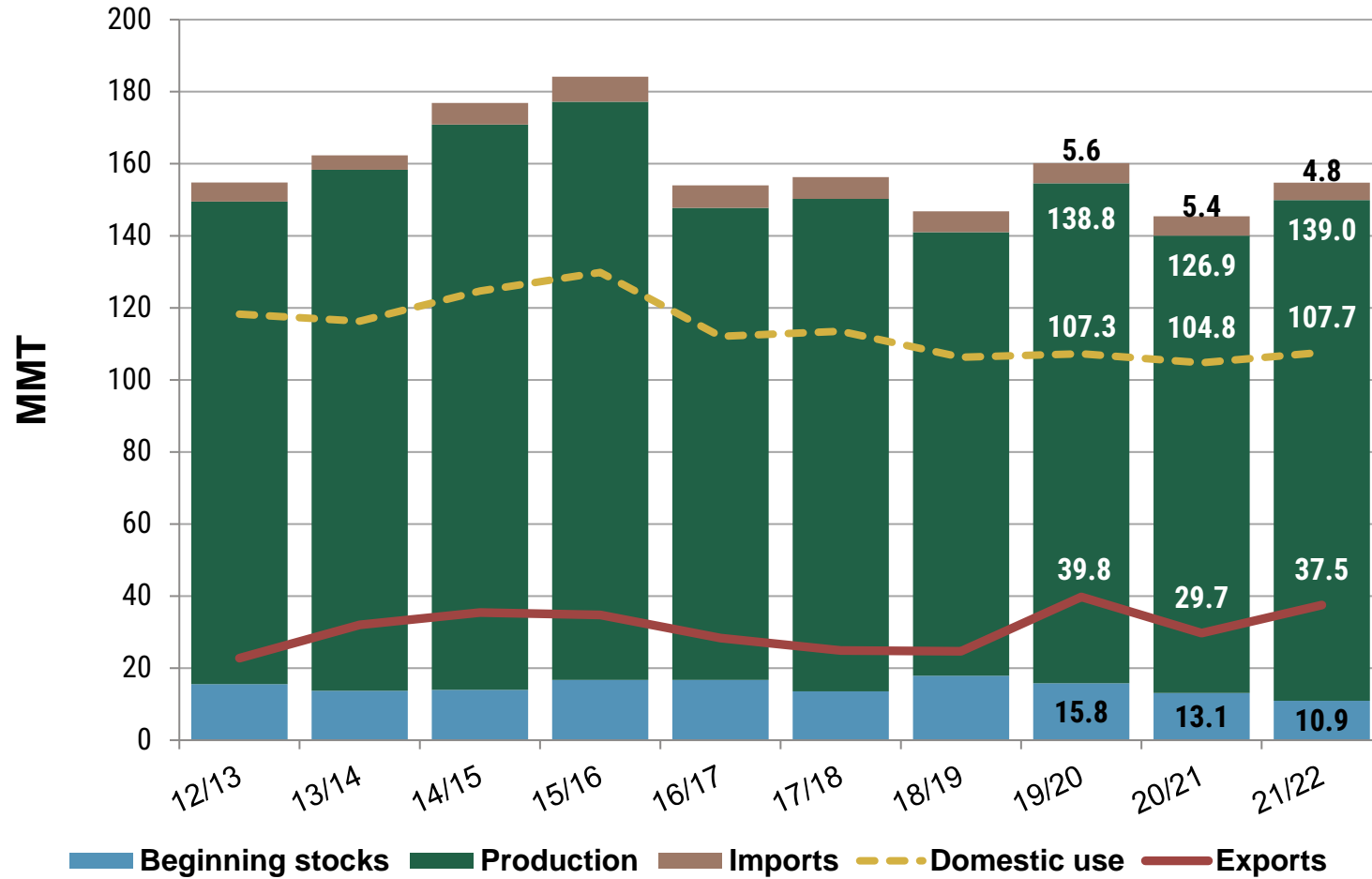
Argentina Situation



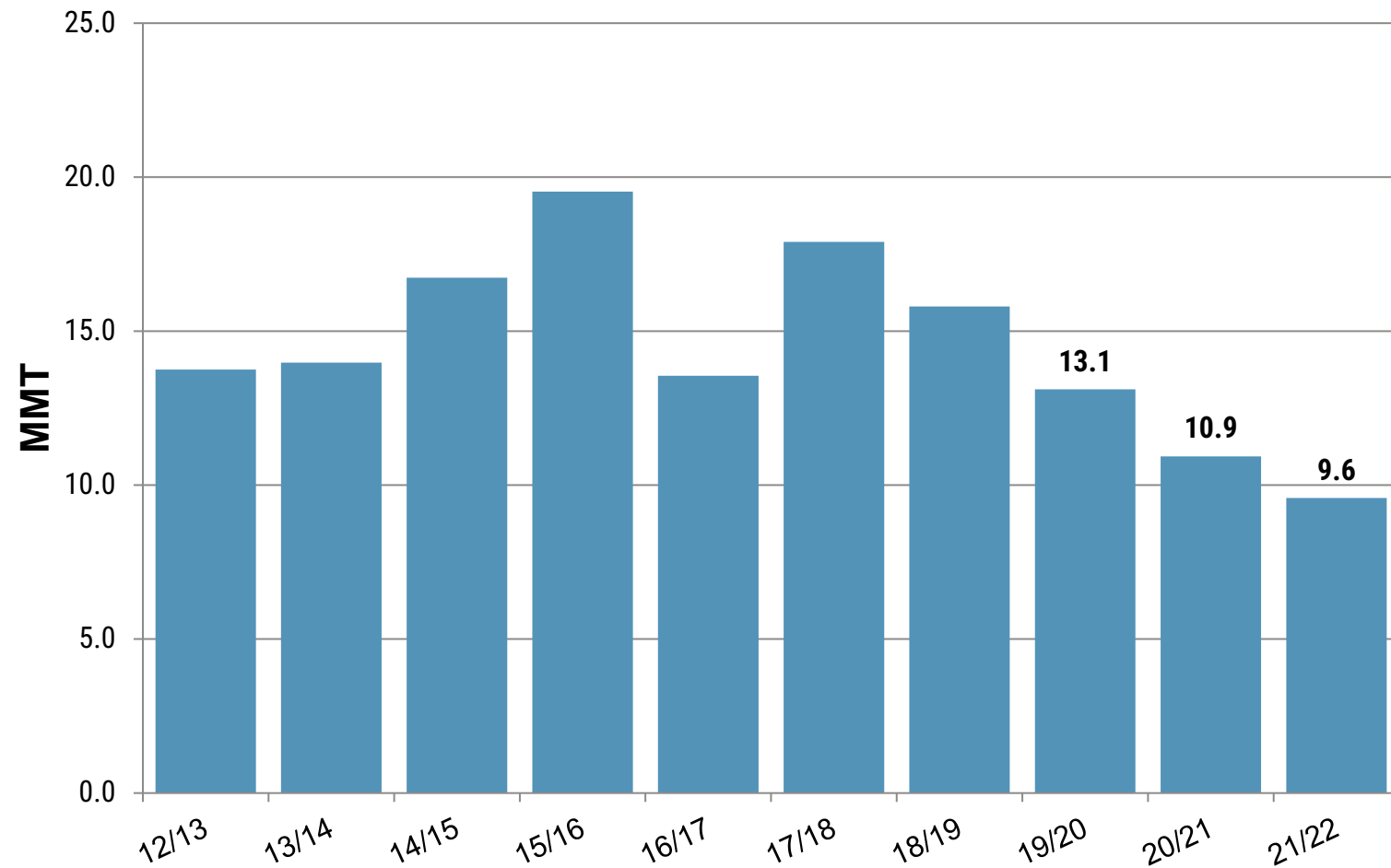
Argentina Ending Stocks



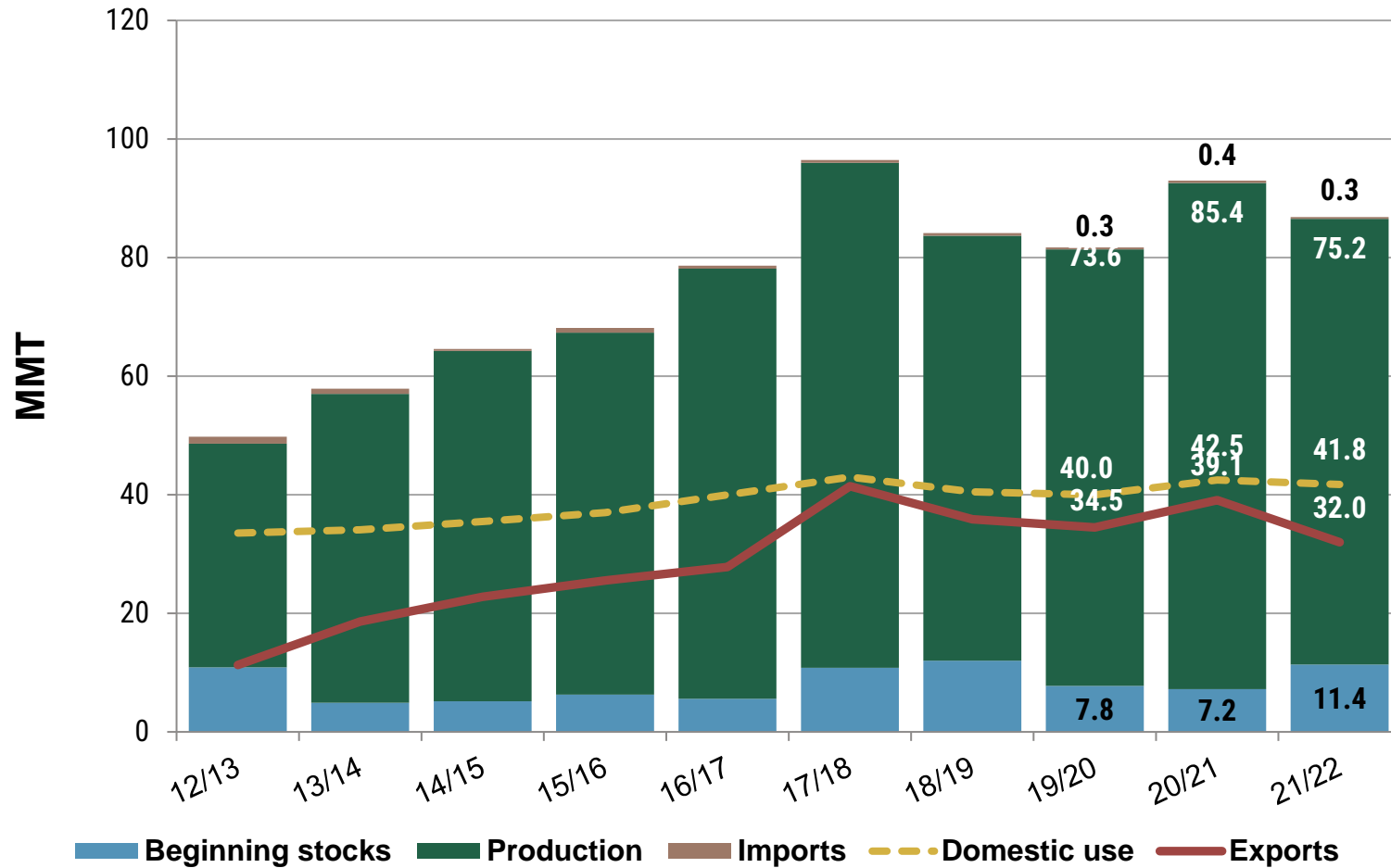
EU Situation



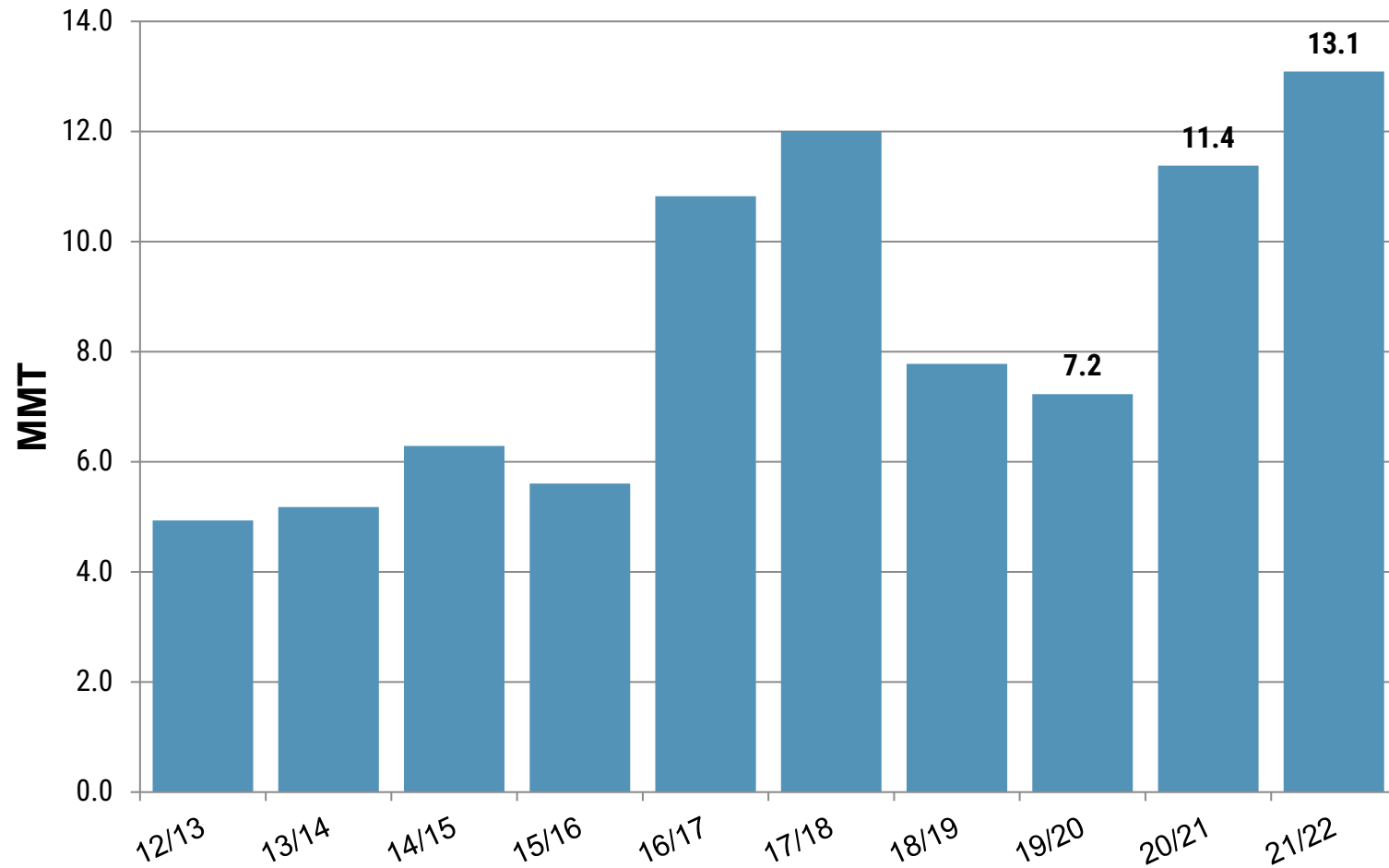
EU Ending Stocks



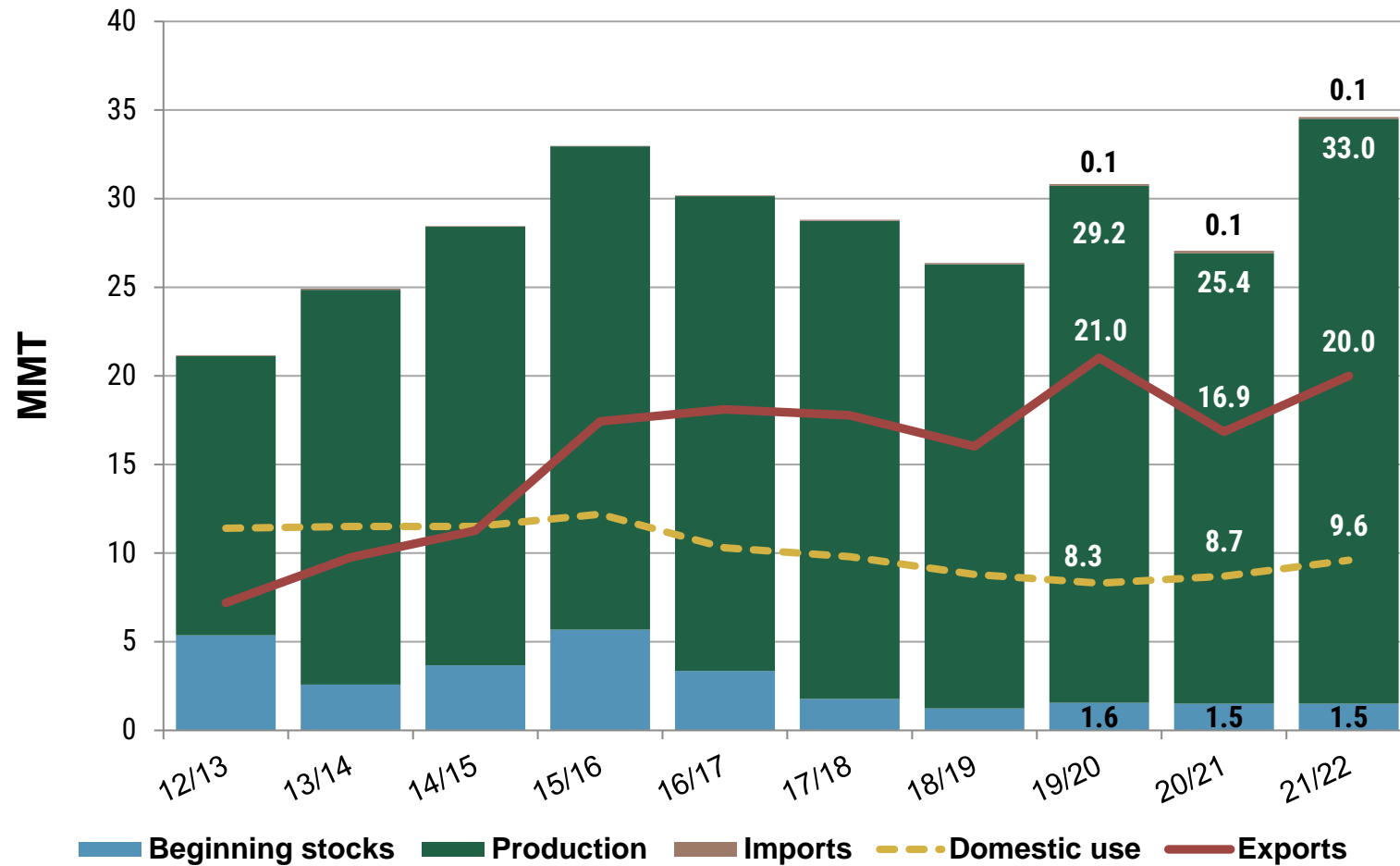
Russia Situation



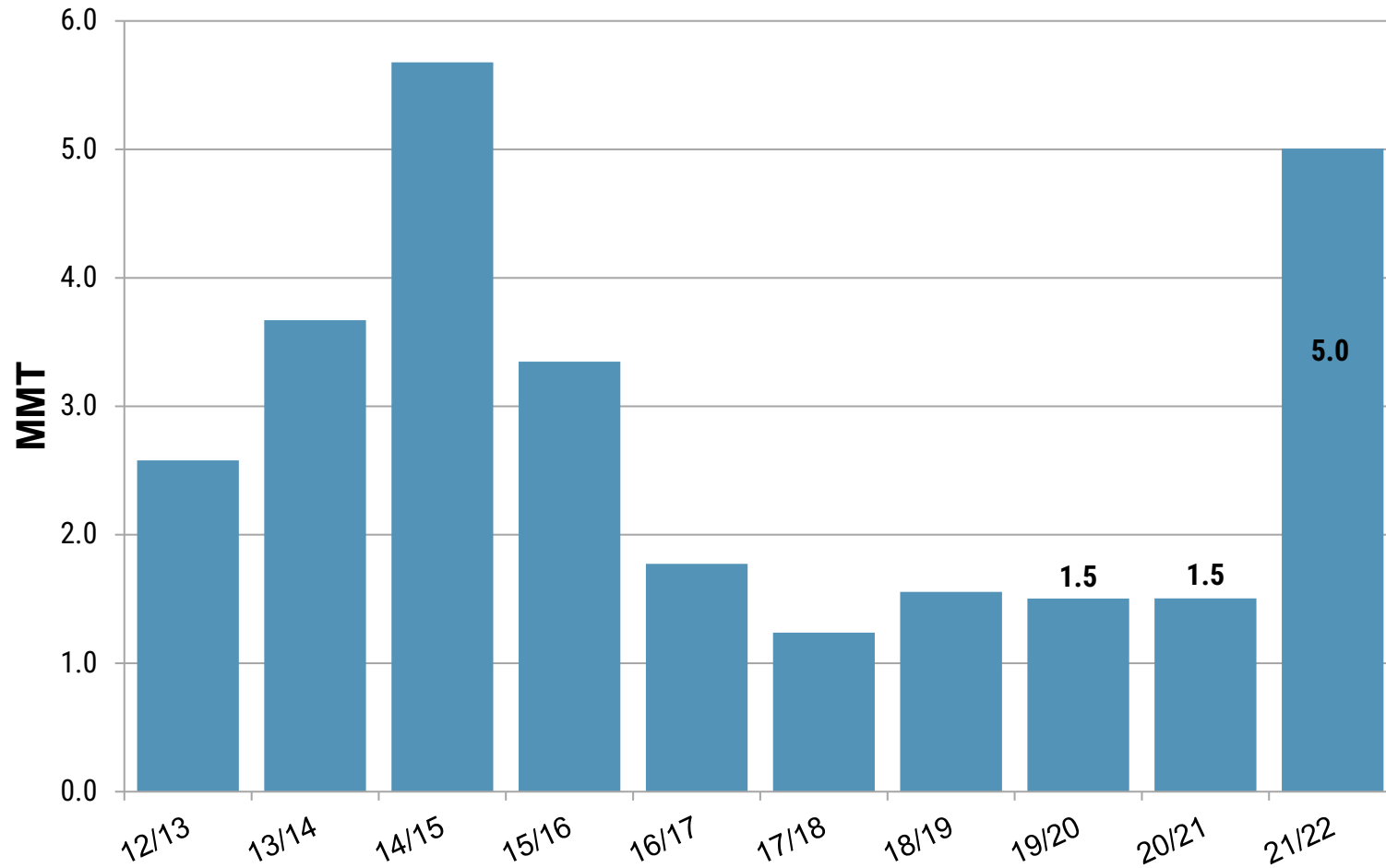
Russia Ending Stocks



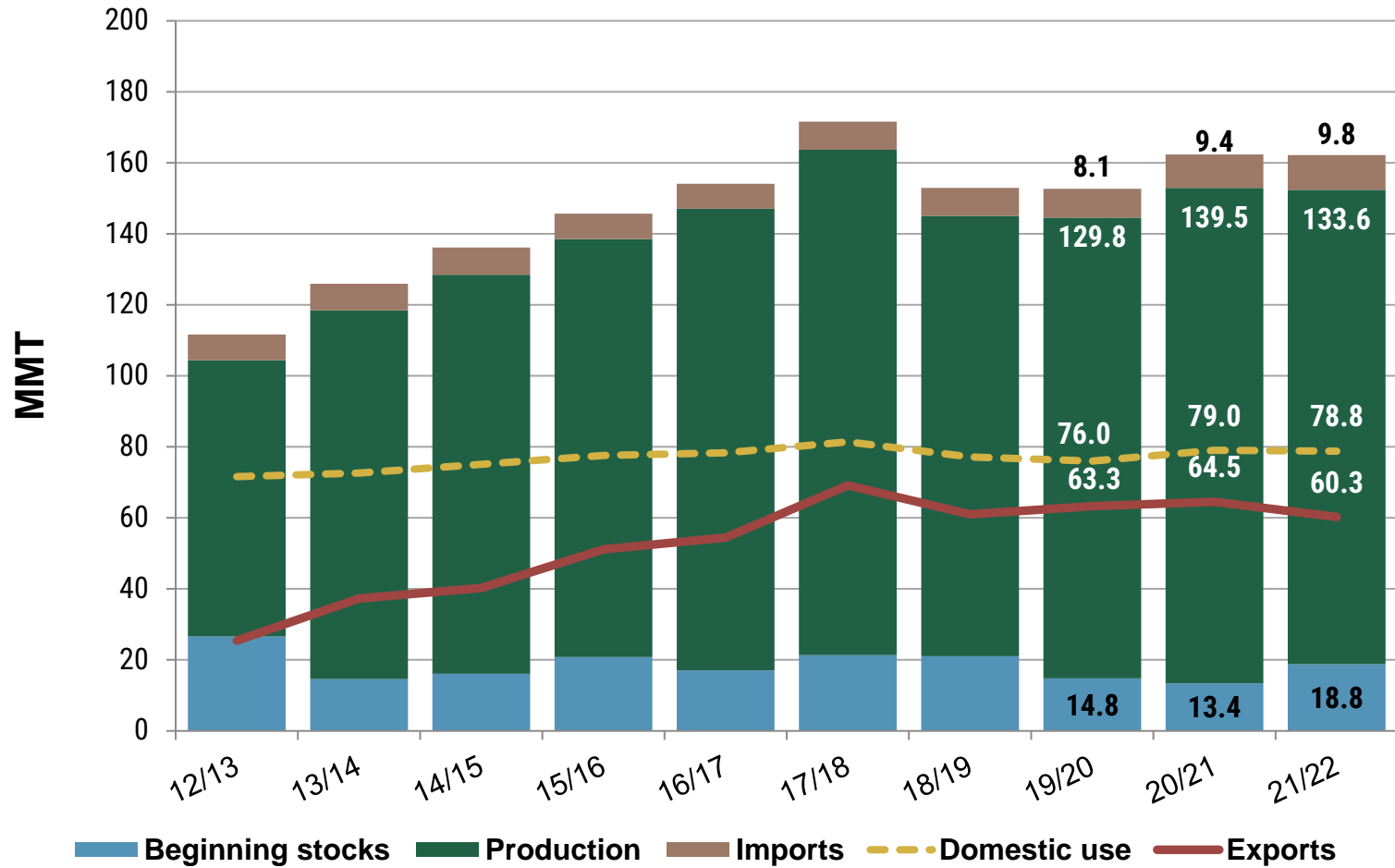
Ukraine Situation



Ukraine Ending Stocks

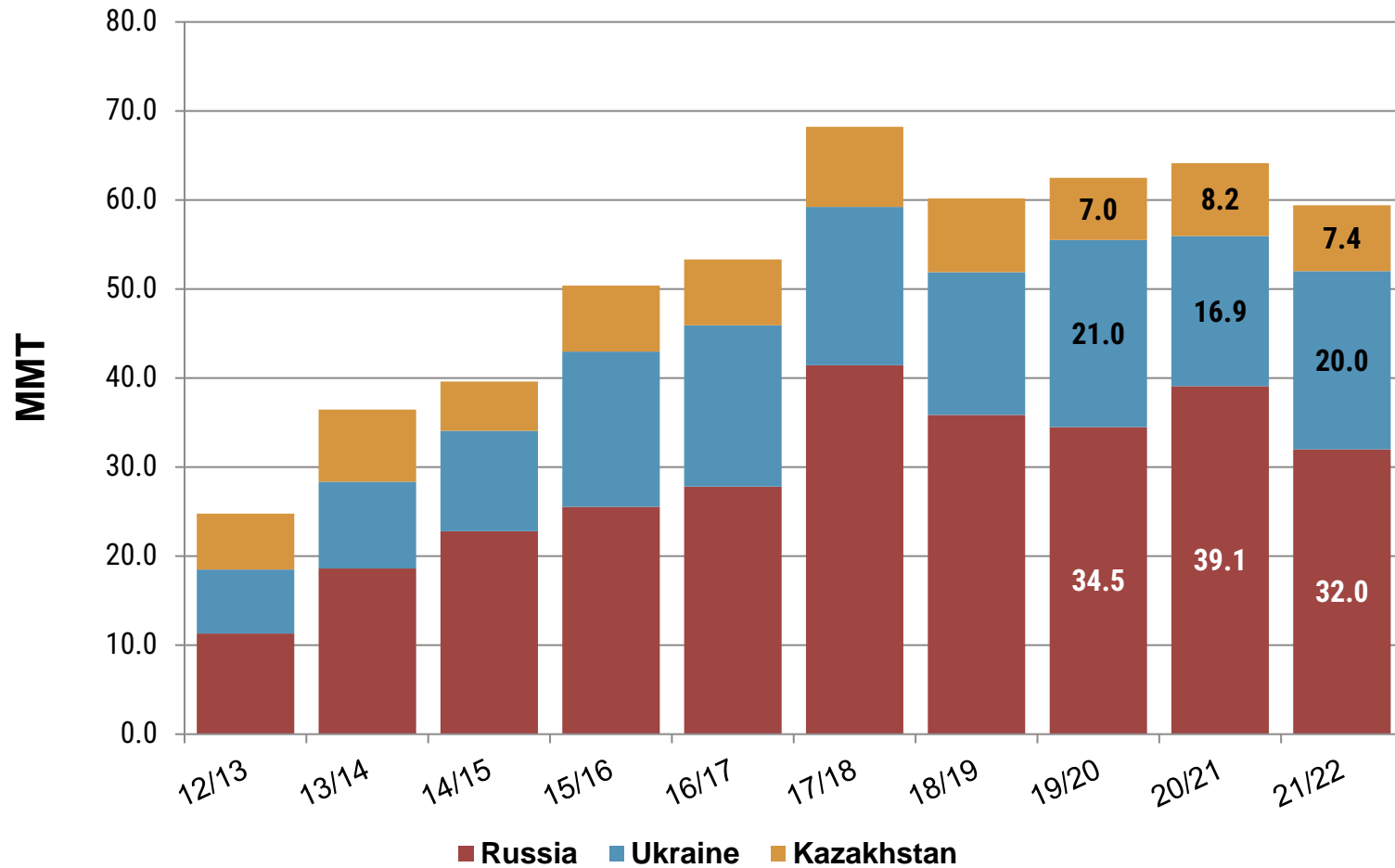


Black Sea Region Situation



Russia, Ukraine and Kazakhstan are the most important wheat producers in the Black Sea Region.

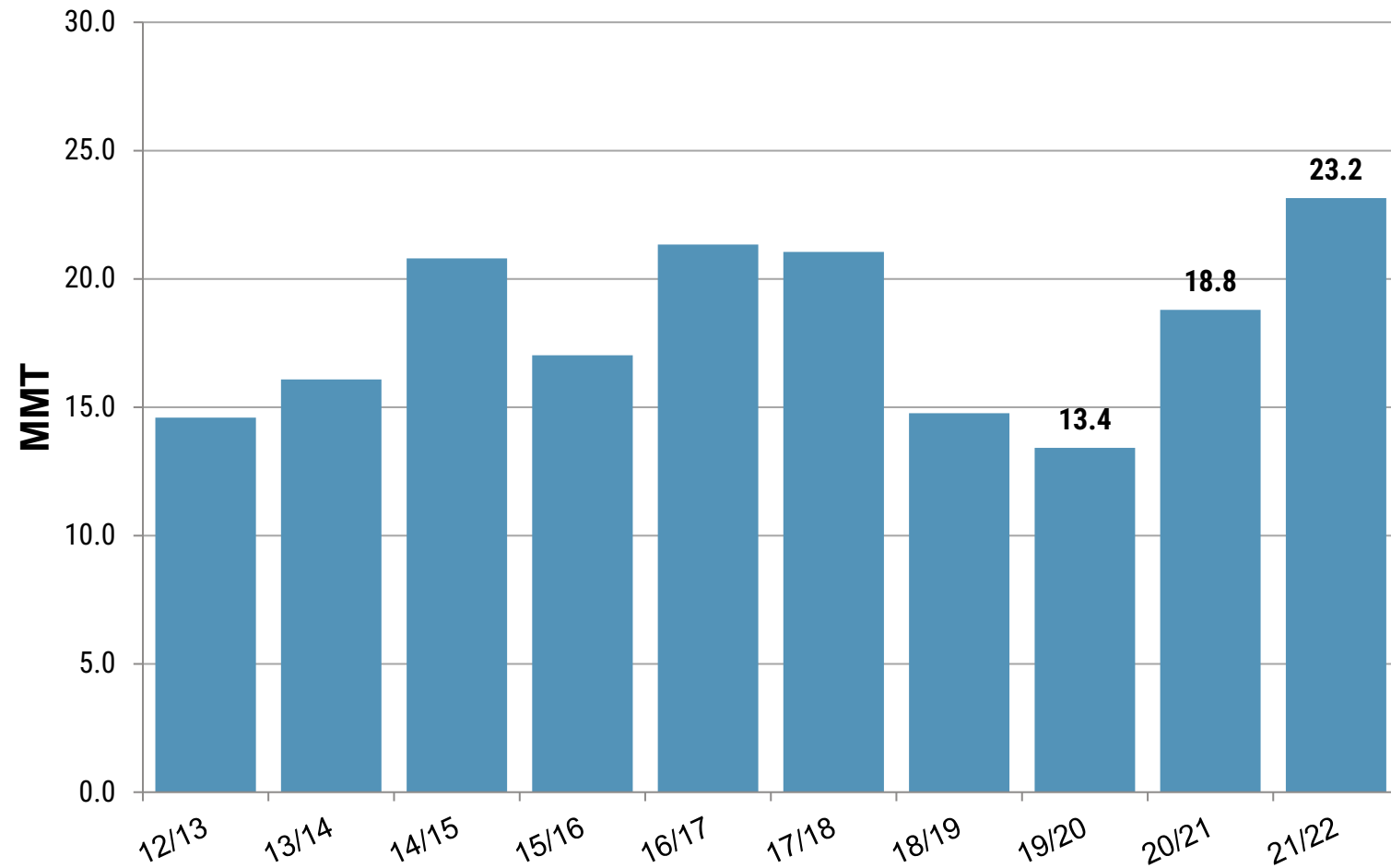
Black Sea Exports



Russia, Ukraine and Kazakhstan are the most important wheat producers in the Black Sea Region.



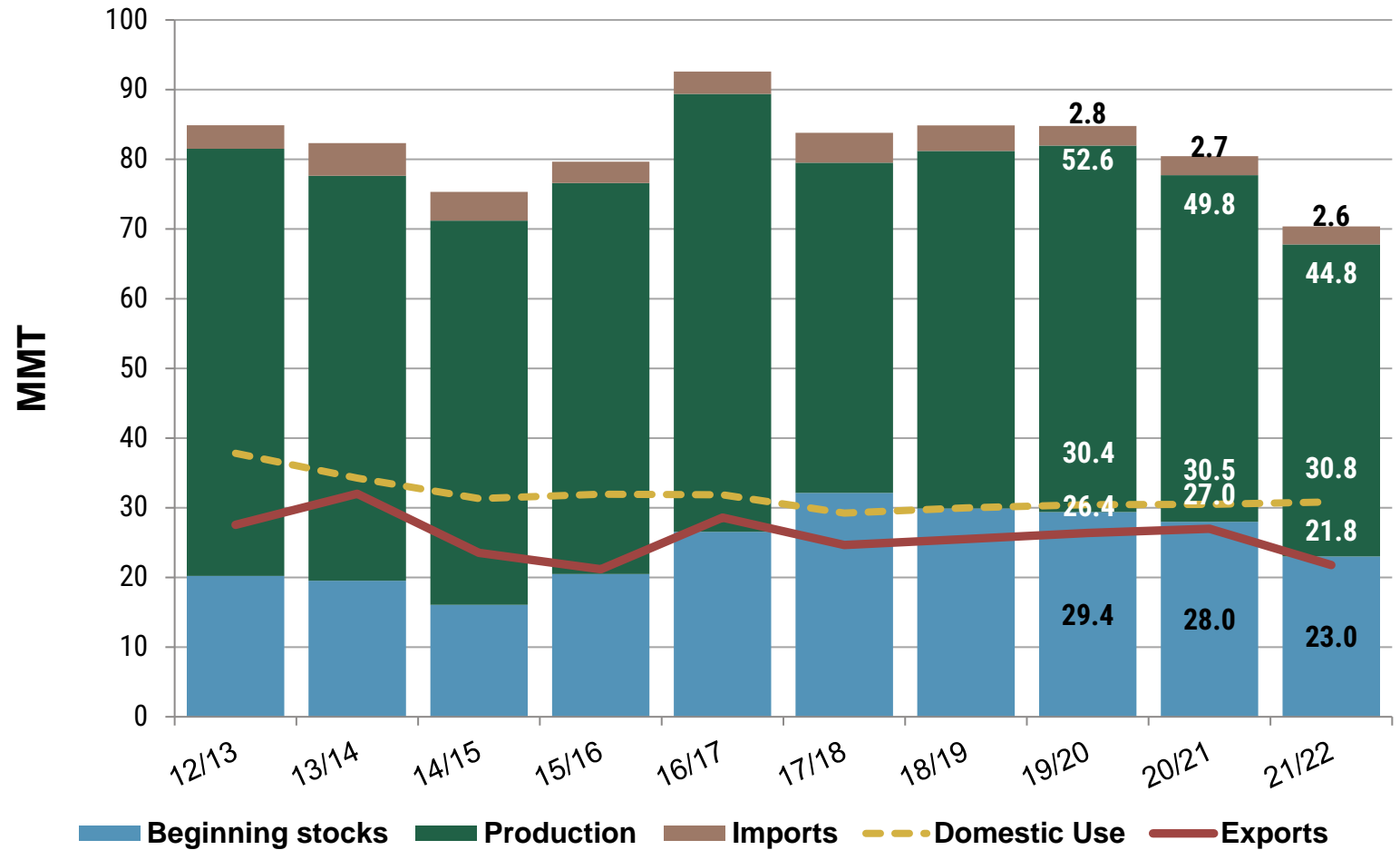
Black Sea Ending Stocks



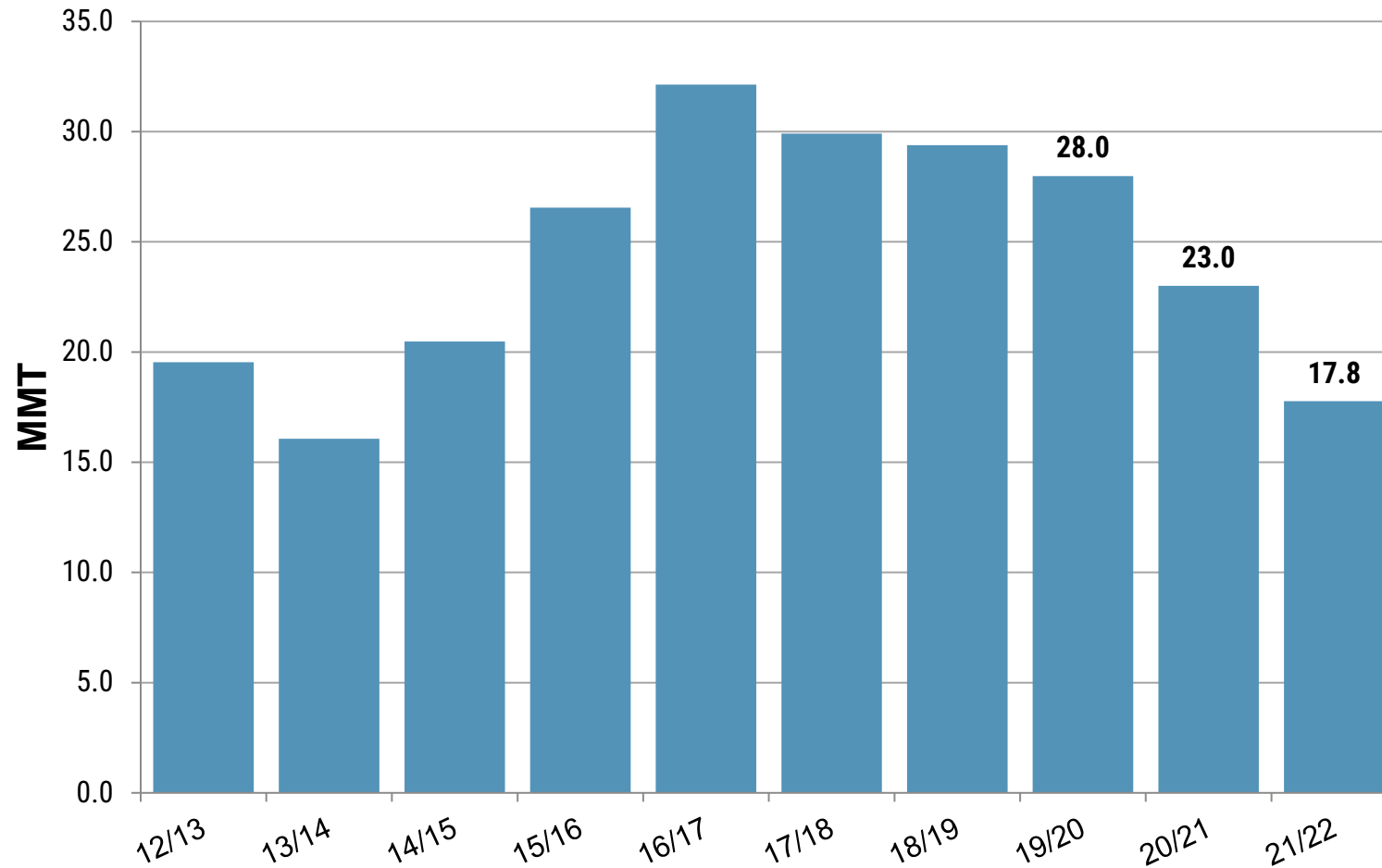
Russia, Ukraine and Kazakhstan are the most important wheat producers in the Black Sea Region.



U.S. Situation



U.S. Ending Stocks

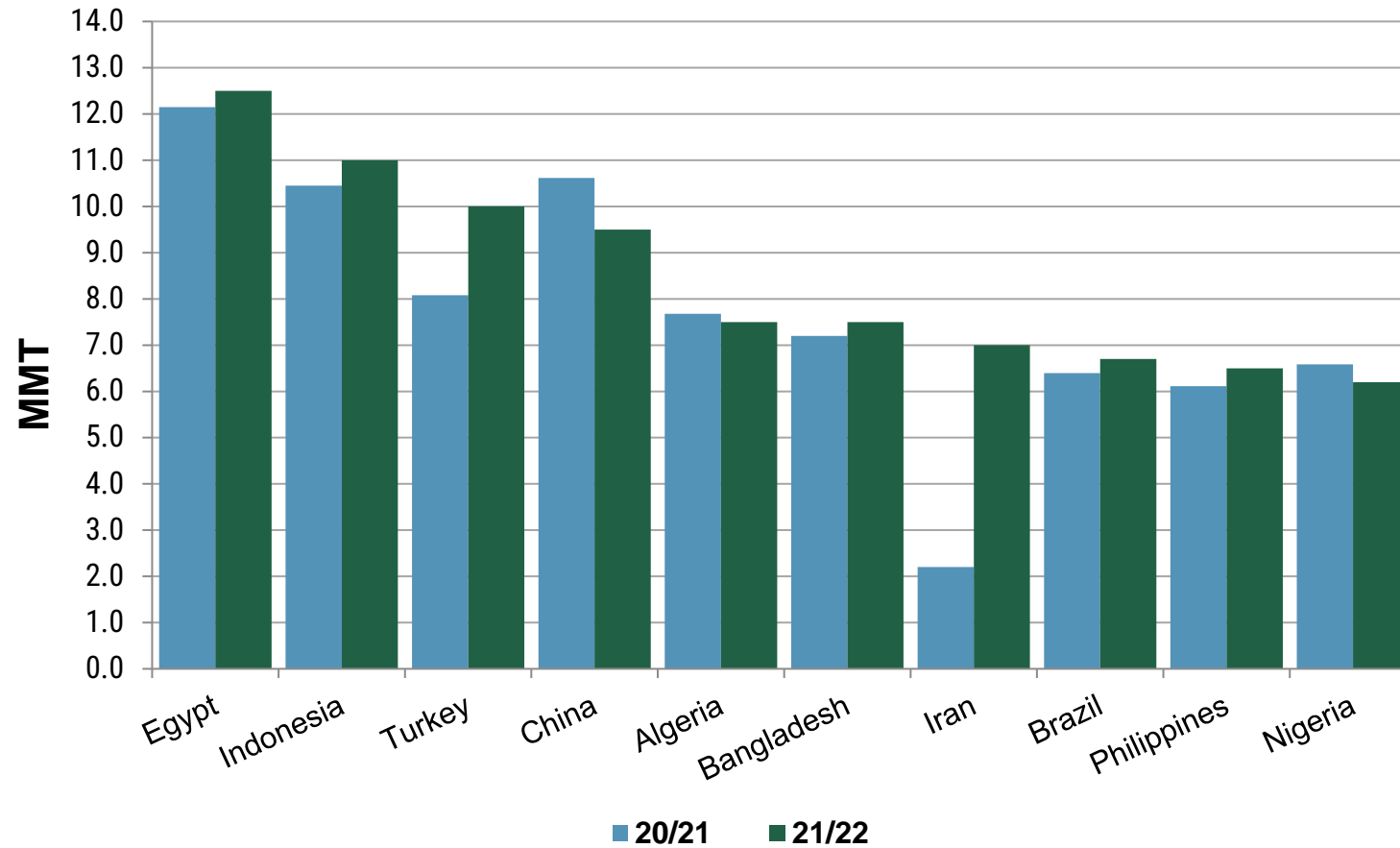




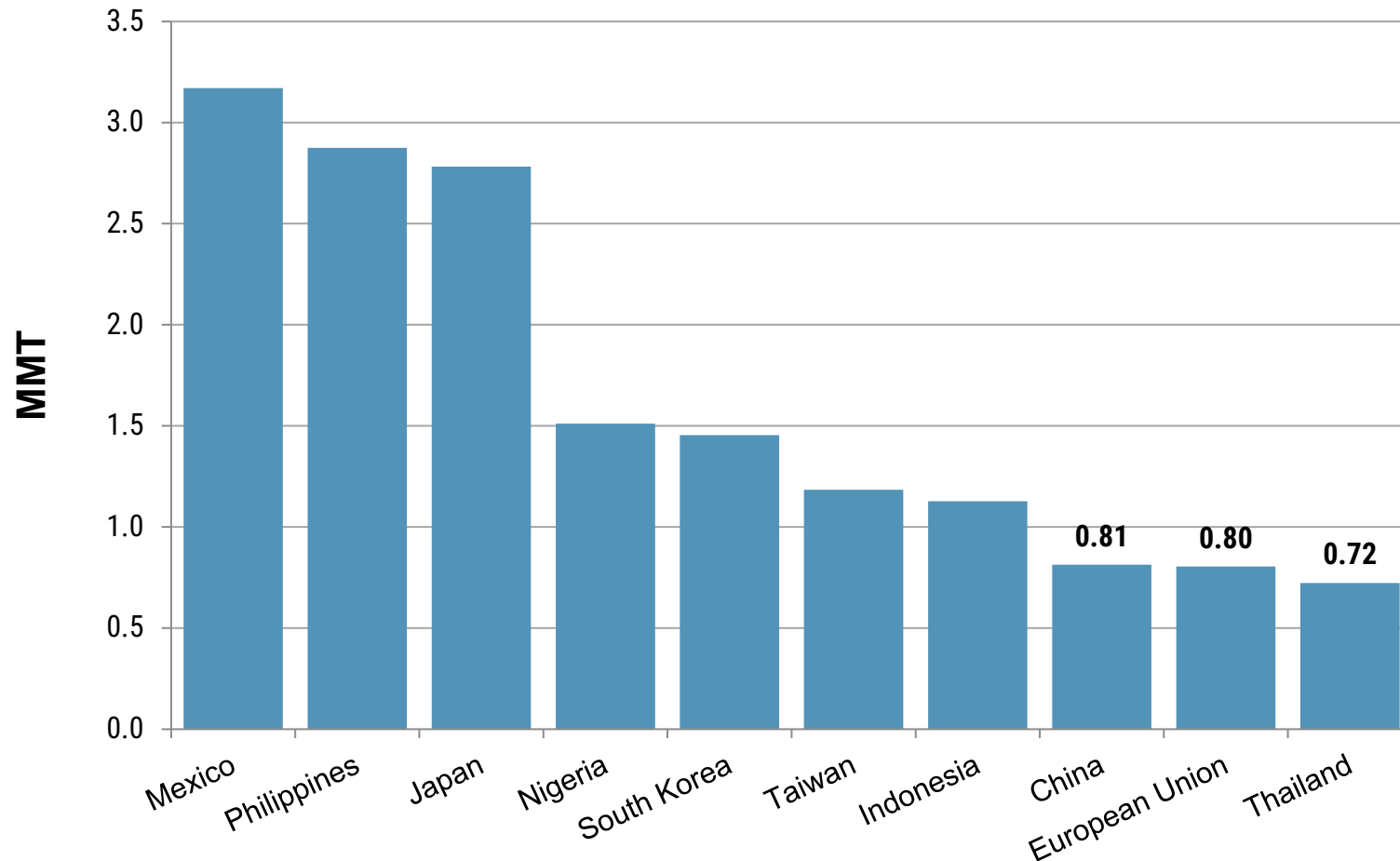
02

Import Demand

Major World Wheat Importers



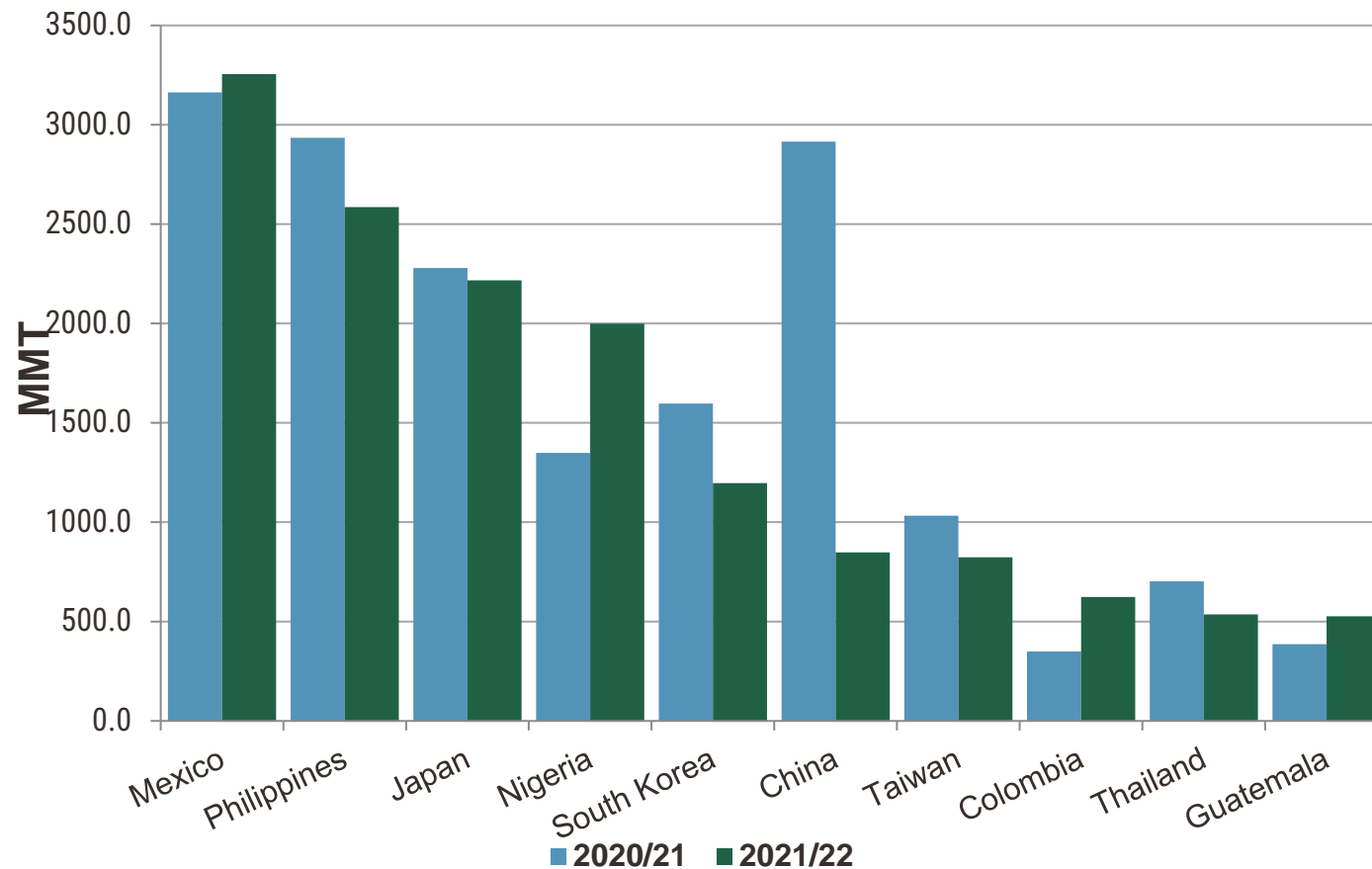
Top 10 Customers for U.S. Wheat (5-year average)



Source: USDA FAS export sales data as of May 31, 2021



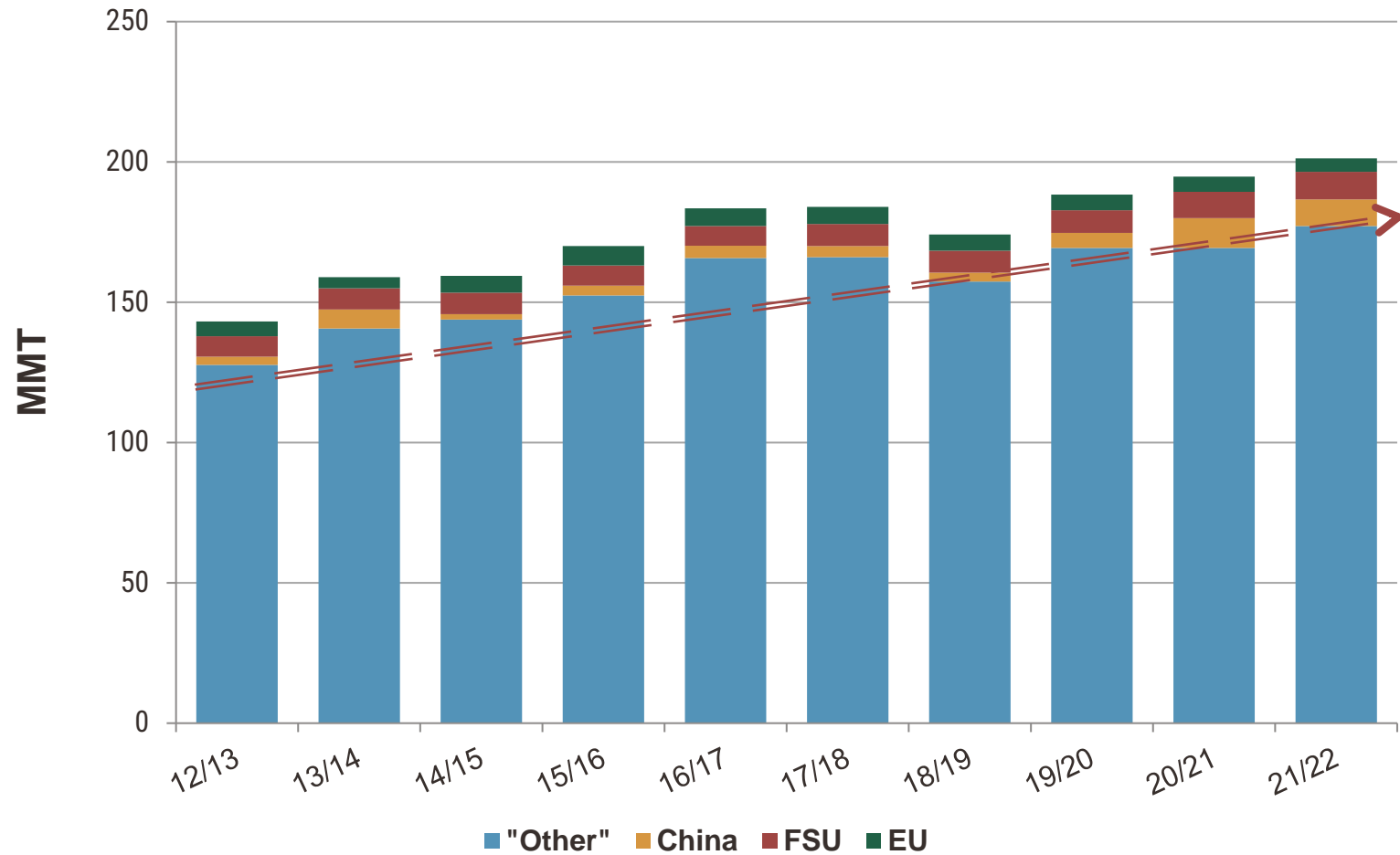
Top 10 Customers for U.S. Wheat (year-to-date sales for current marketing year delivery)



Source: USDA FAS export sales data as of February 24, 2022



World Wheat Imports

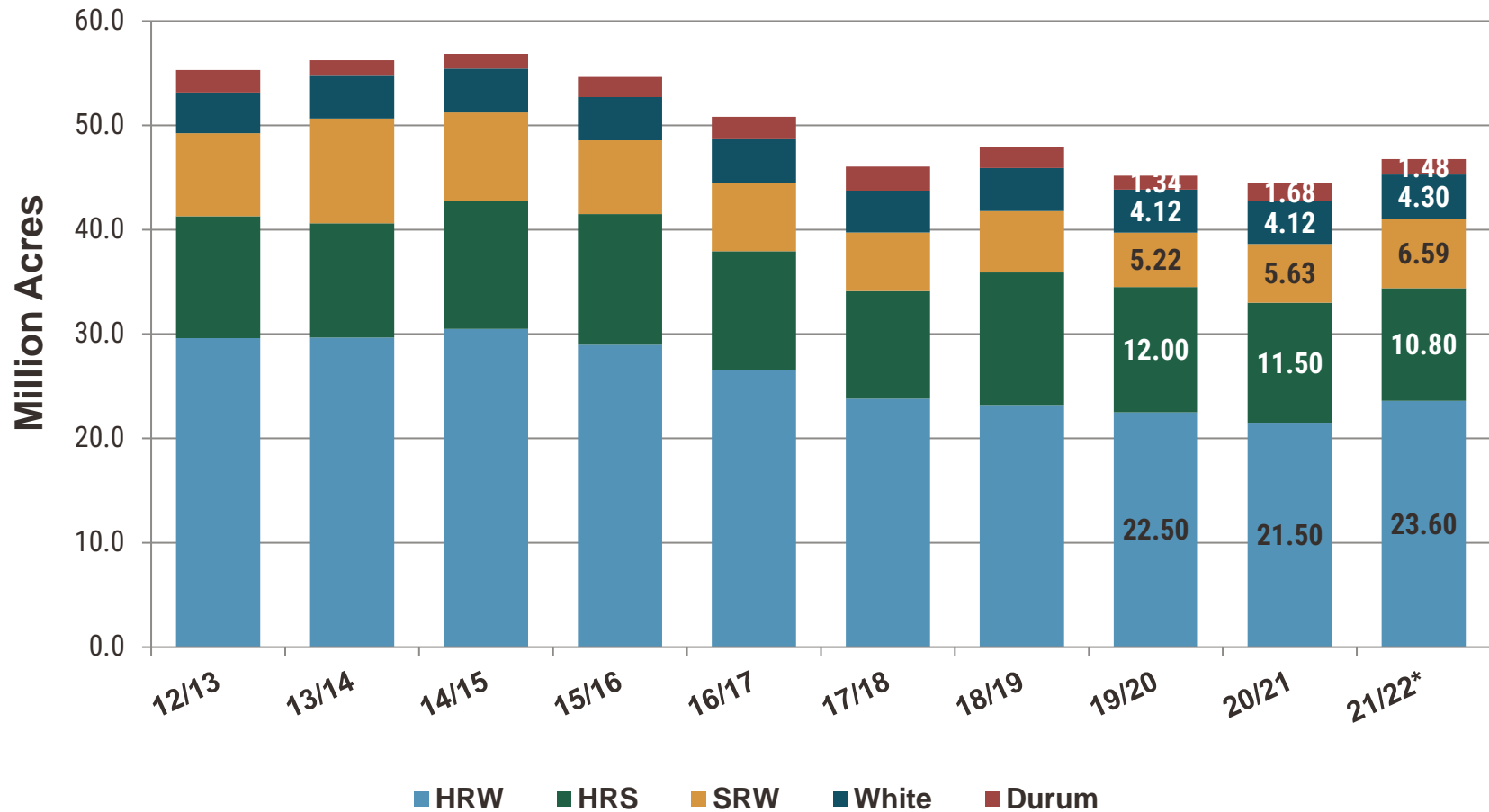




03

*U.S. Situation by
Class*

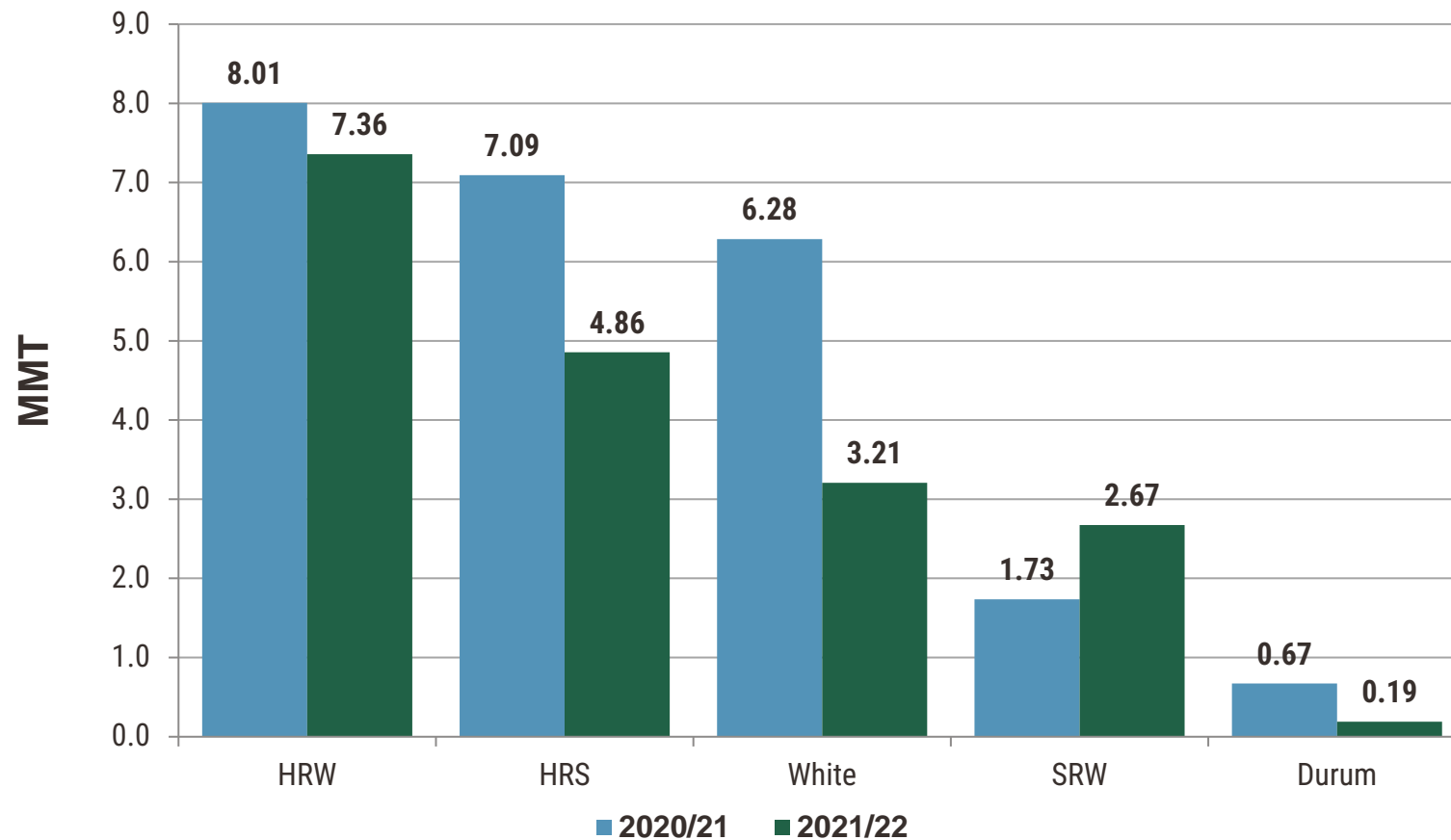
U.S. Wheat Planted Area



*Source: June 2021 USDA Acreage Report

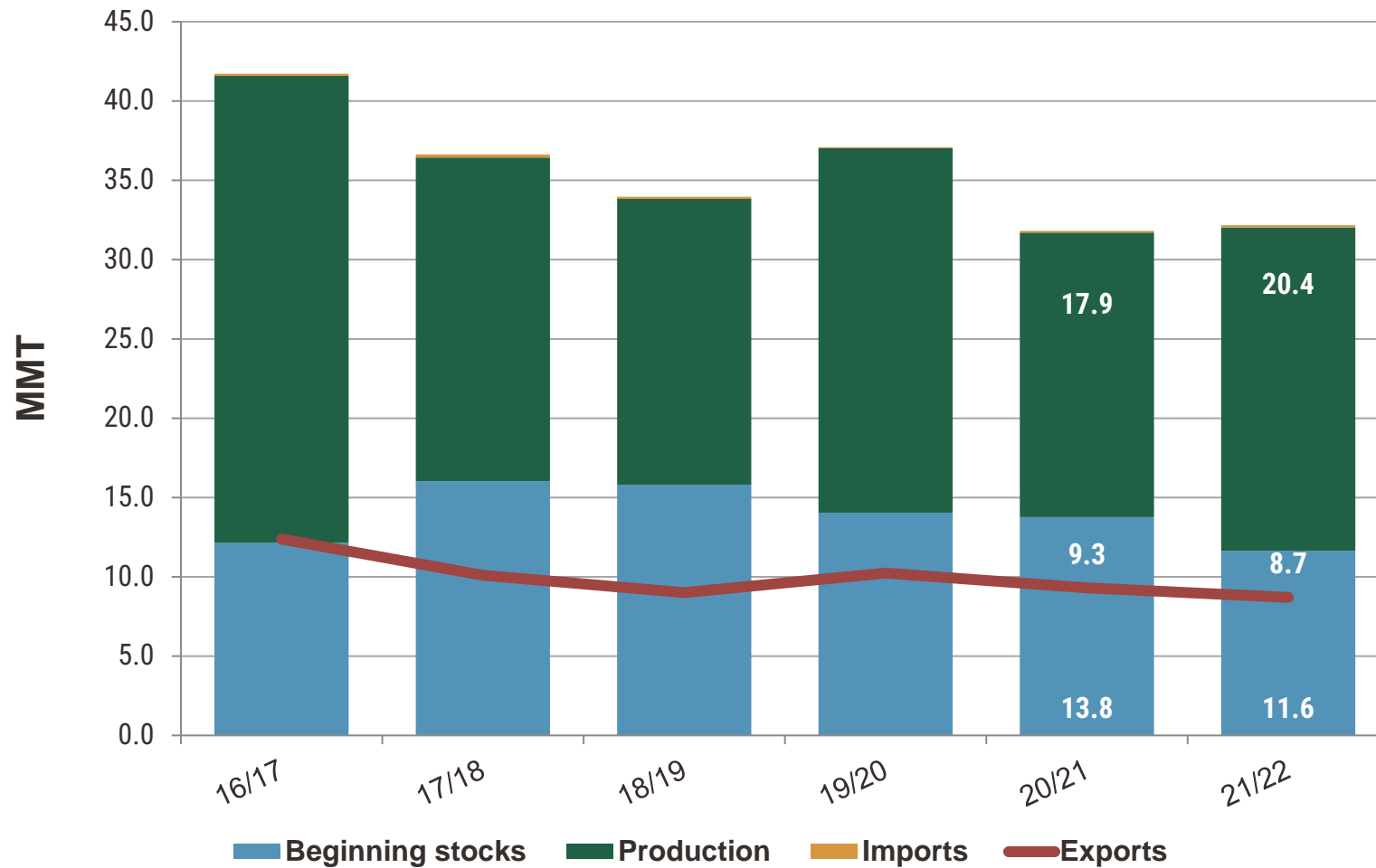
U.S. Wheat Sales by Class

(year-to-date sales for current marketing year delivery)

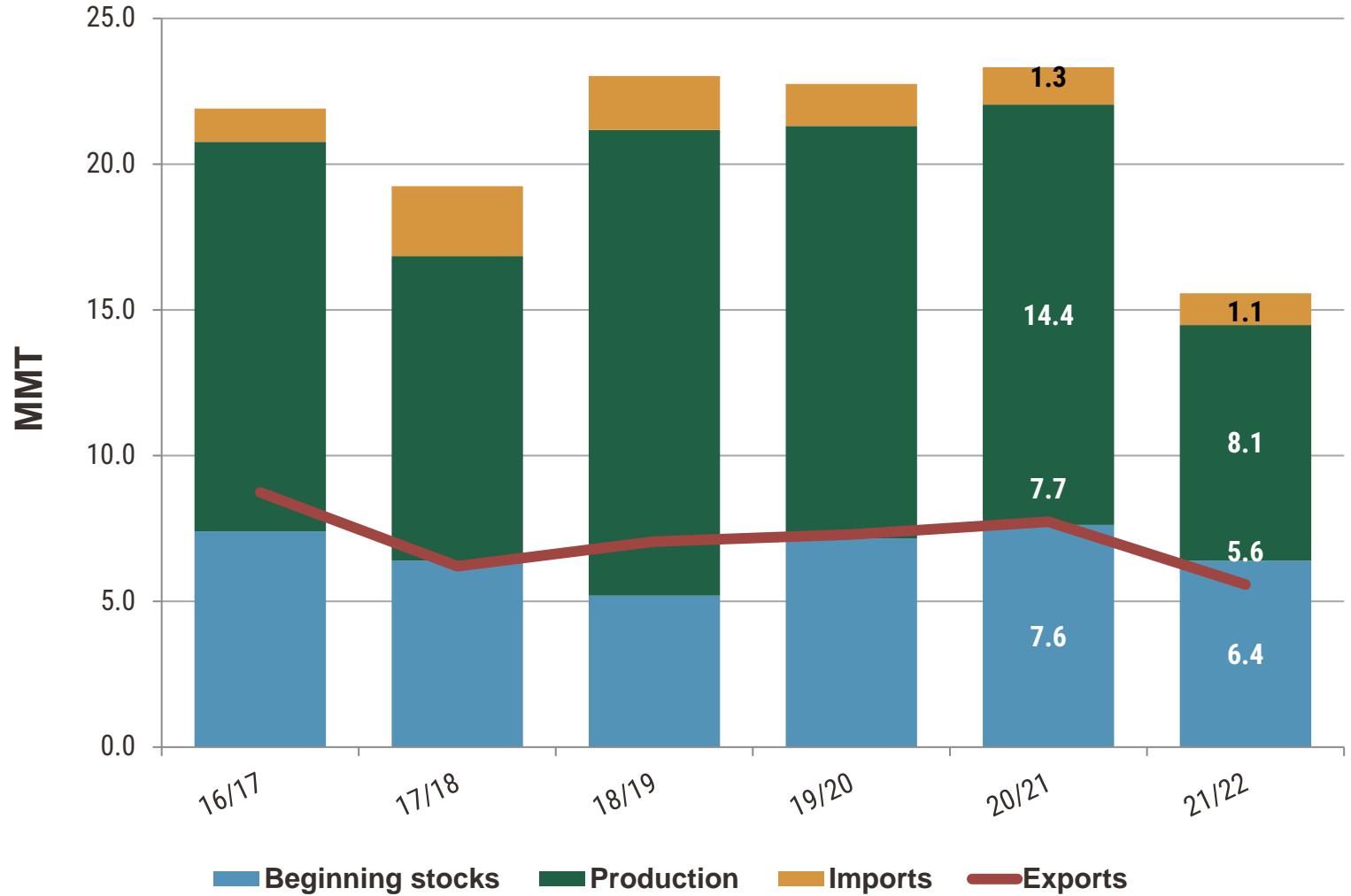


Source: USDA FAS export sales data as of February 24, 2022

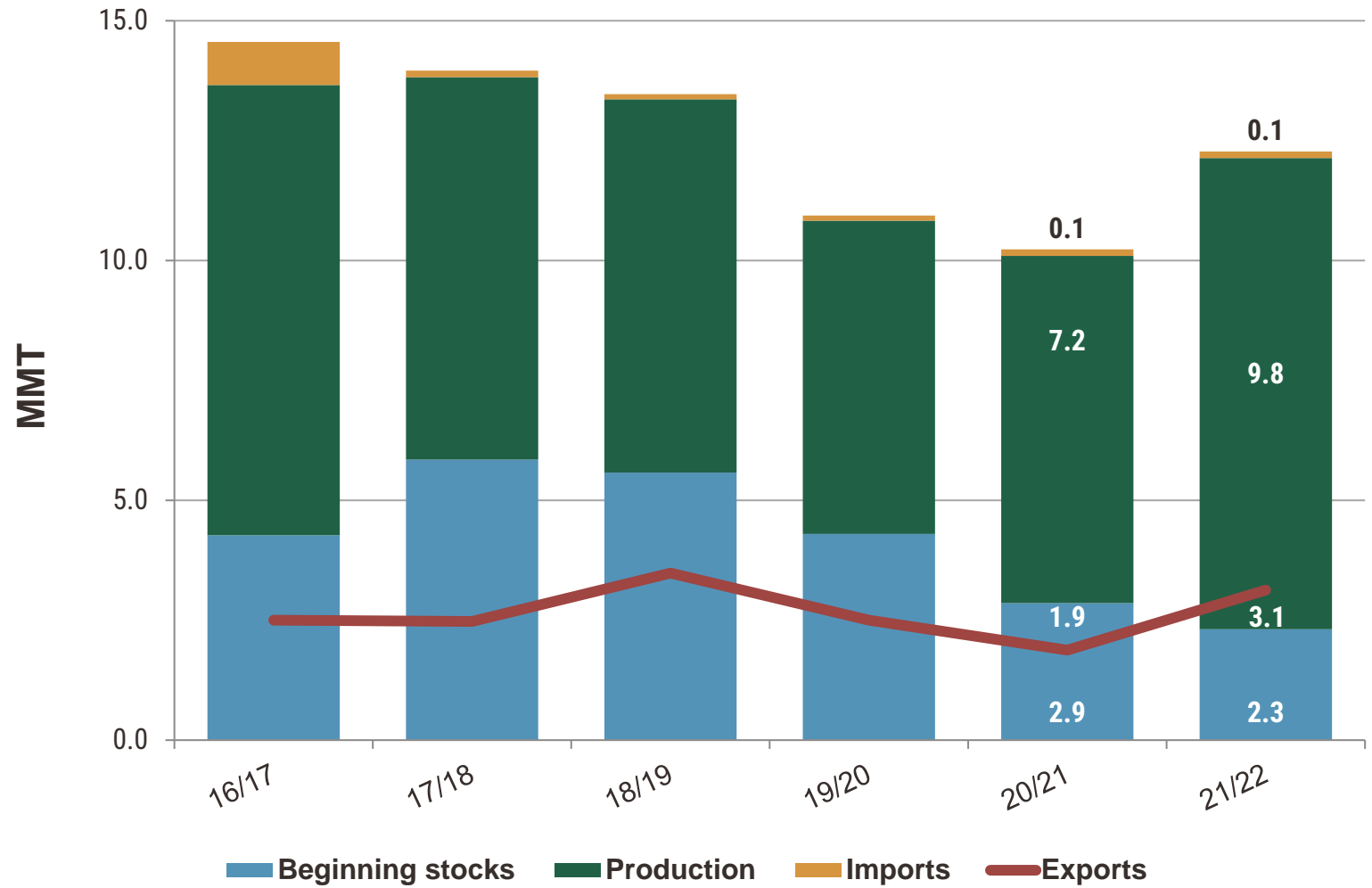
U.S. Hard Red Winter



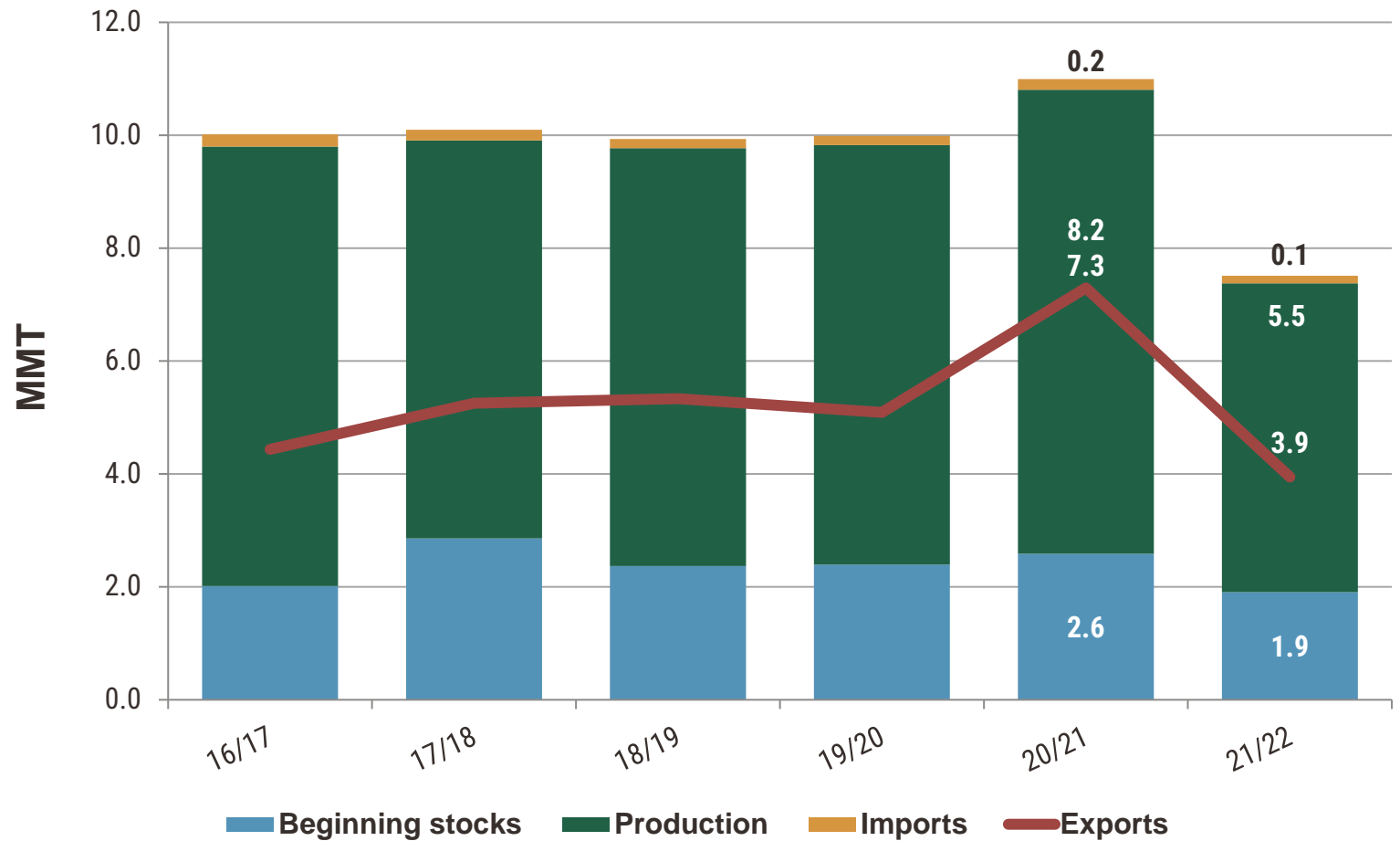
U.S. Hard Red Spring



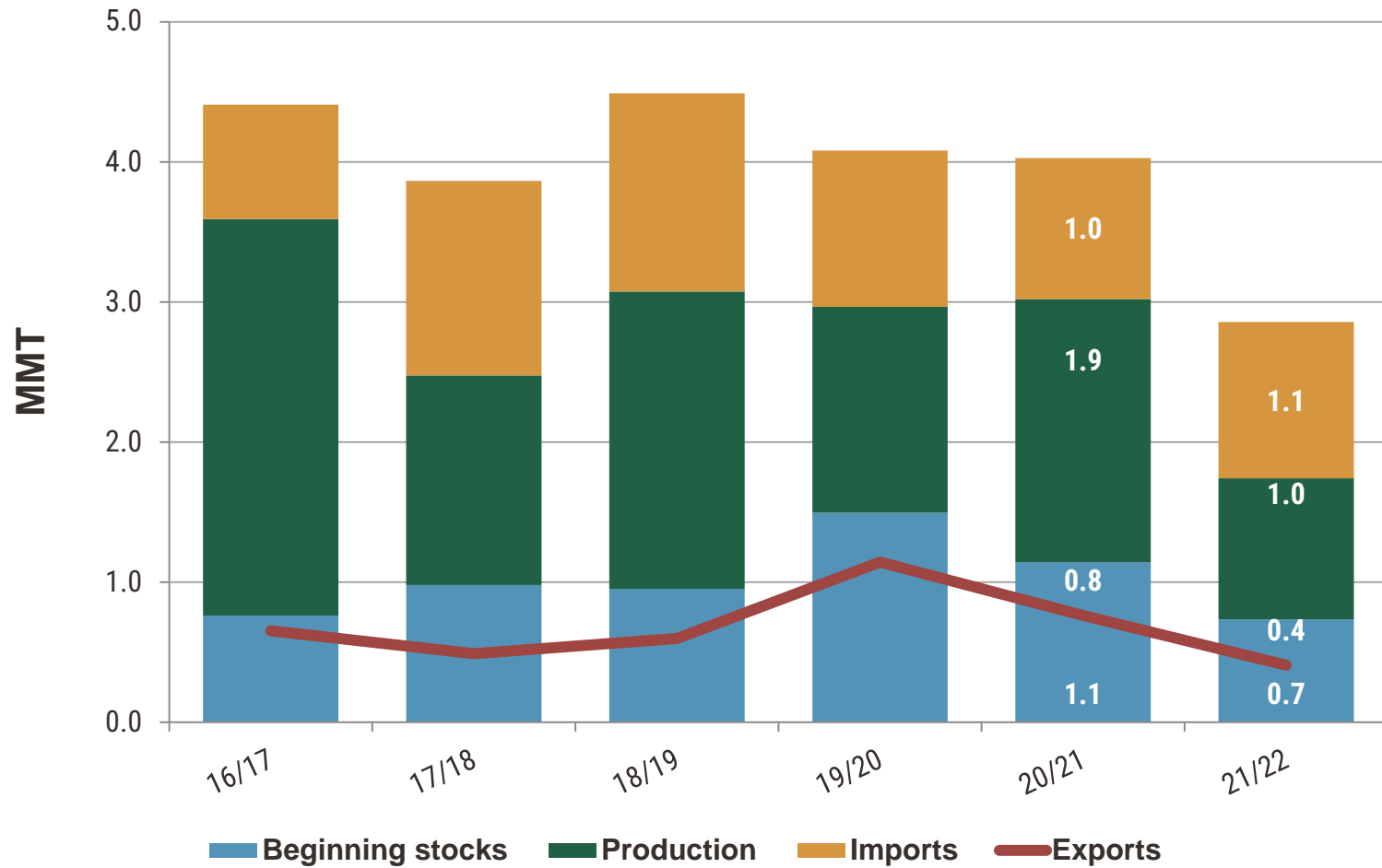
U.S. Soft Red Winter



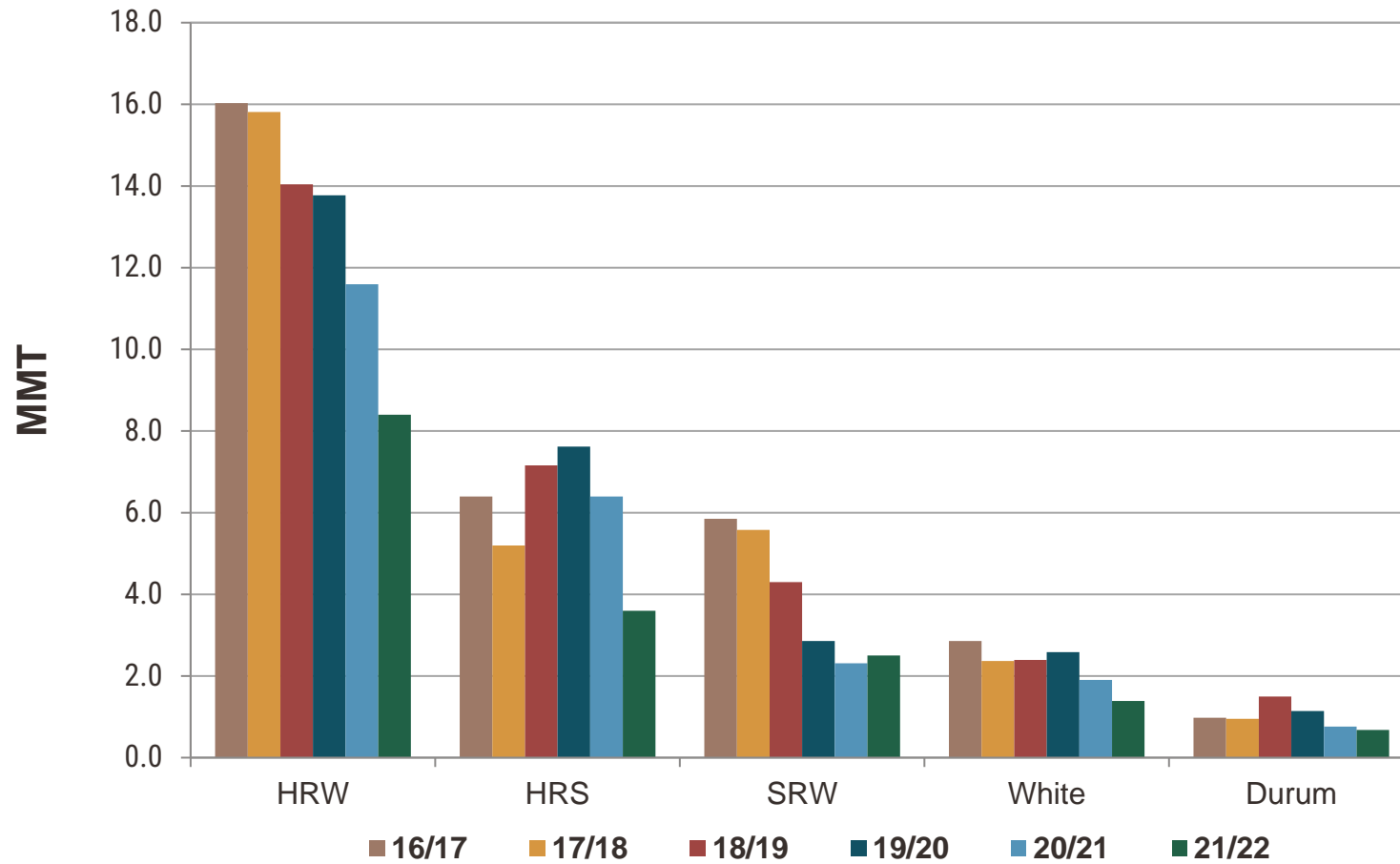
U.S. White



U.S. Durum



U.S. Wheat Ending Stocks by Class



U.S. Wheat Supply and Demand (MMT)

	HRW		HRS		SRW	
	<u>20/21</u>	<u>21/22</u>	<u>20/21</u>	<u>21/22</u>	<u>20/21</u>	<u>21/22</u>
Beginning Stocks	13.8	11.6	7.62	6.40	2.86	2.31
Production	17.9	20.4	14.5	8.1	7.24	9.83
Supply Total	31.8	32.2	23.4	15.6	10.23	12.3
Domestic Use	10.9	13.8	9.23	6.64	6.04	6.50
Exports	9.3	8.7	7.73	5.58	1.88	3.13
Use Total	20.2	22.5	17.0	12.2	7.92	9.63
Ending Stocks	11.6	9.7	6.40	3.37	2.31	2.64
Stocks-to-Use	58%	43%	38%	28%	29%	27%

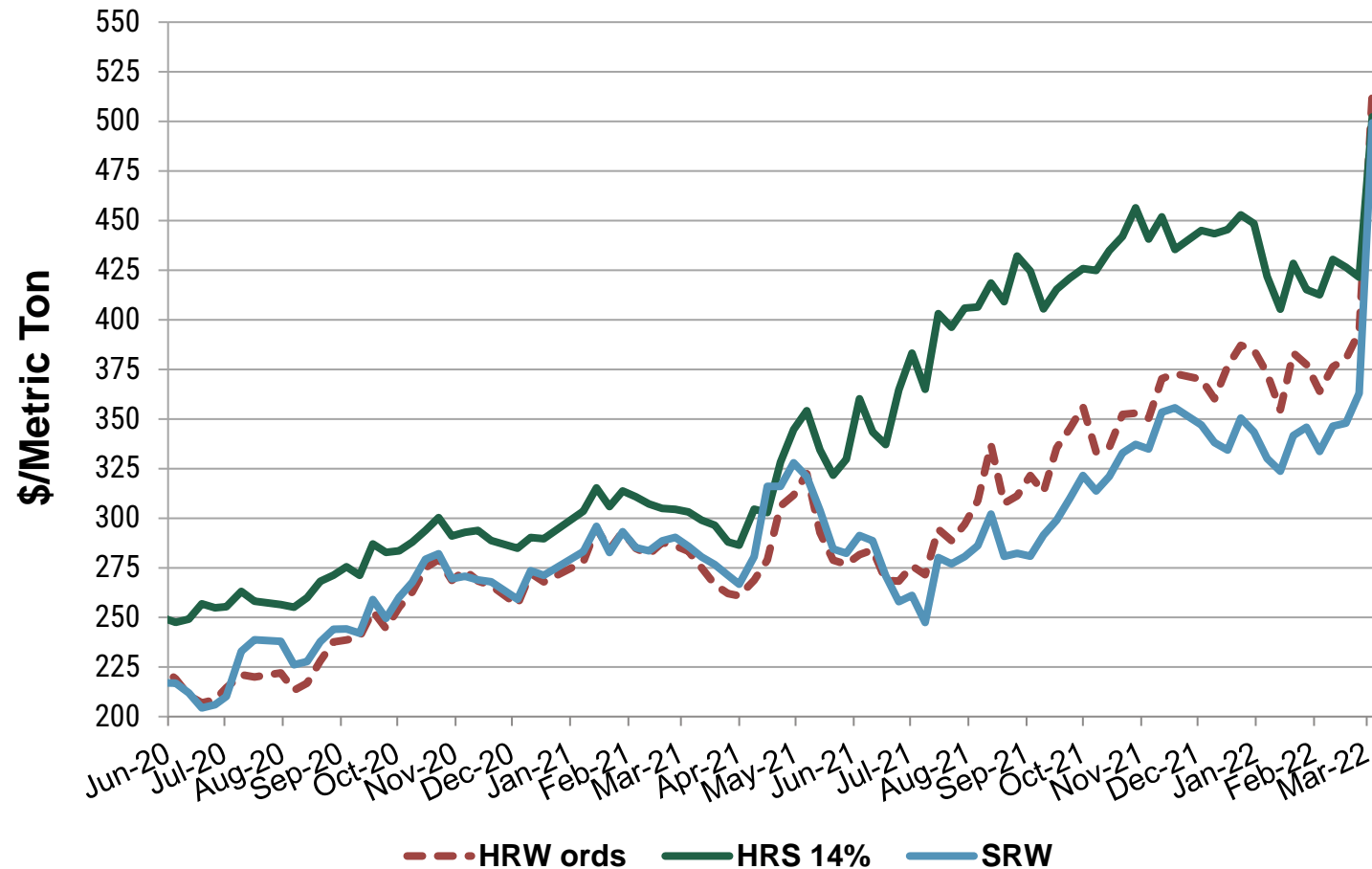


U.S. Wheat Supply and Demand (MMT)

	White		Durum		Total	
	<u>20/21</u>	<u>21/22</u>	<u>20/21</u>	<u>21/22</u>	<u>20/21</u>	<u>21/22</u>
Beginning Stocks	2.59	1.91	1.14	0.73	28.0	23.0
Production	8.25	5.47	1.88	1.01	49.8	44.8
Supply Total	11.0	7.51	4.03	2.86	80.5	70.4
Domestic Use	1.74	2.18	2.53	1.77	30.5	30.8
Exports	7.35	3.95	0.76	0.41	27.0	21.8
Use Total	9.09	6.12	3.29	2.18	57.5	52.6
Ending Stocks	1.91	1.39	0.73	0.68	23.0	17.8
Stocks-to-Use	21%	23%	22%	31%	40%	34%



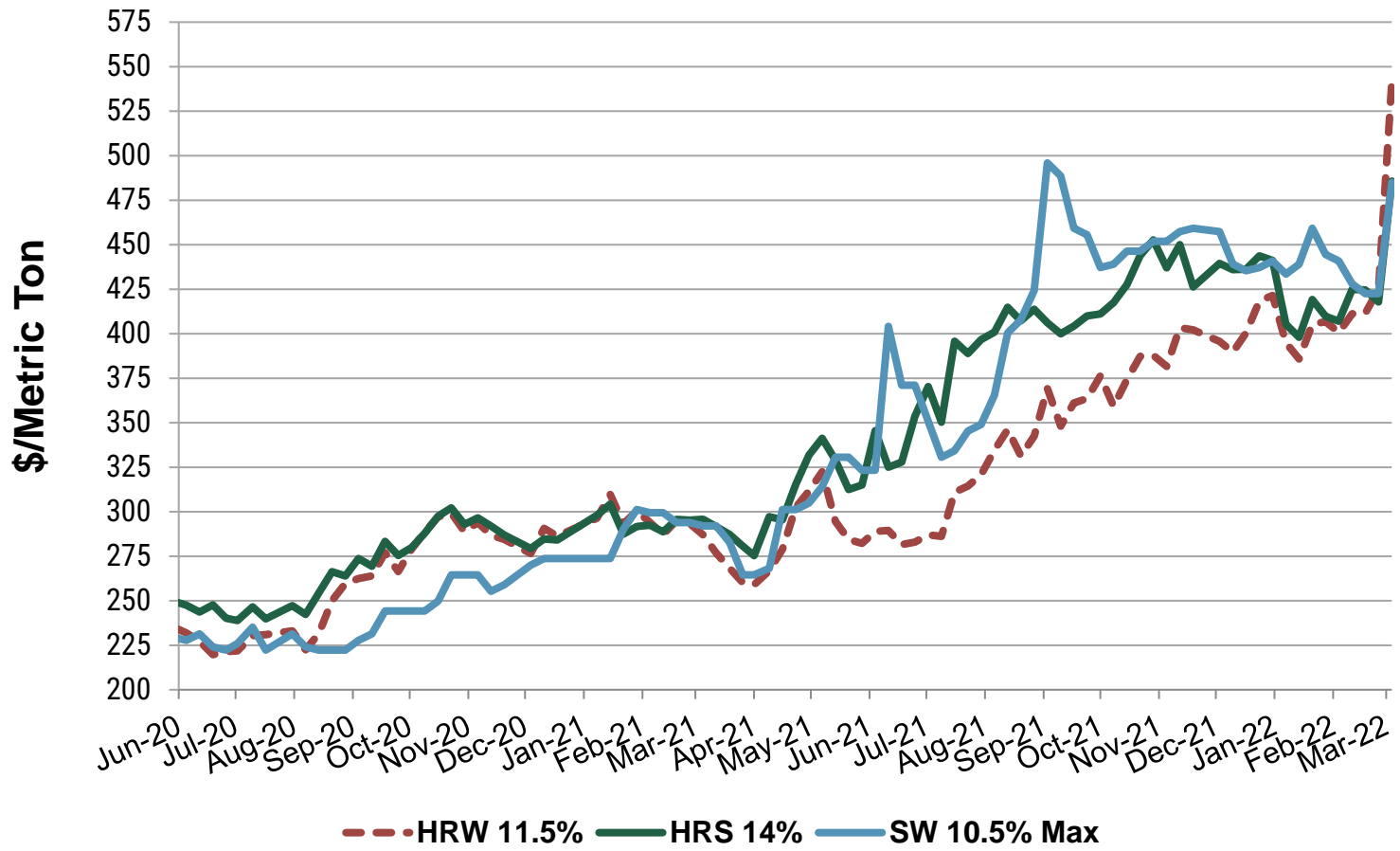
U.S. FOB Gulf Prices



Source: U.S. Wheat Associates Price Report, March 4, 2022



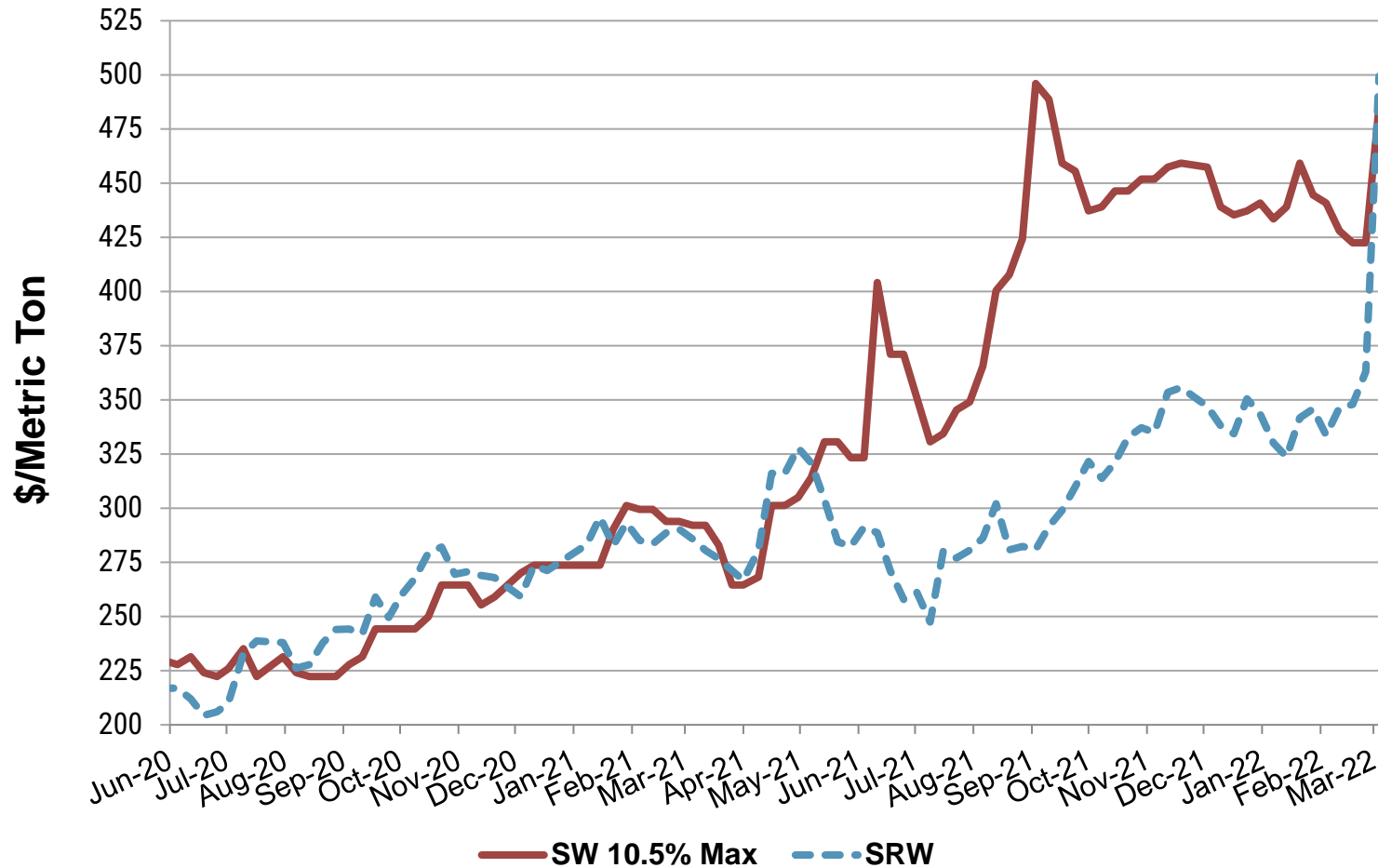
U.S. FOB PNW Prices



Source: U.S. Wheat Associates Price Report, March 4, 2022



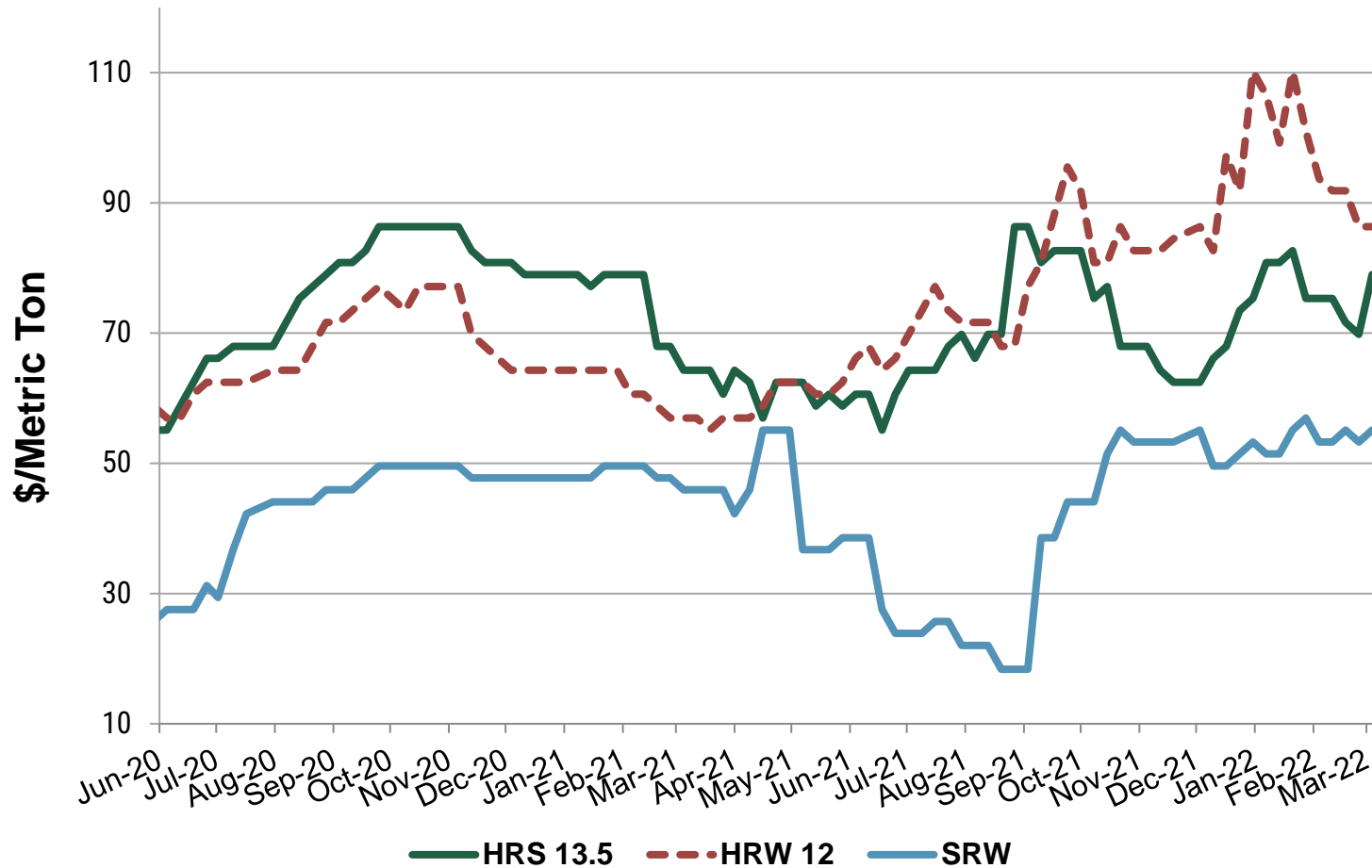
U.S. FOB Soft White and SRW Prices



Source: U.S. Wheat Associates Price Report, March 4, 2022



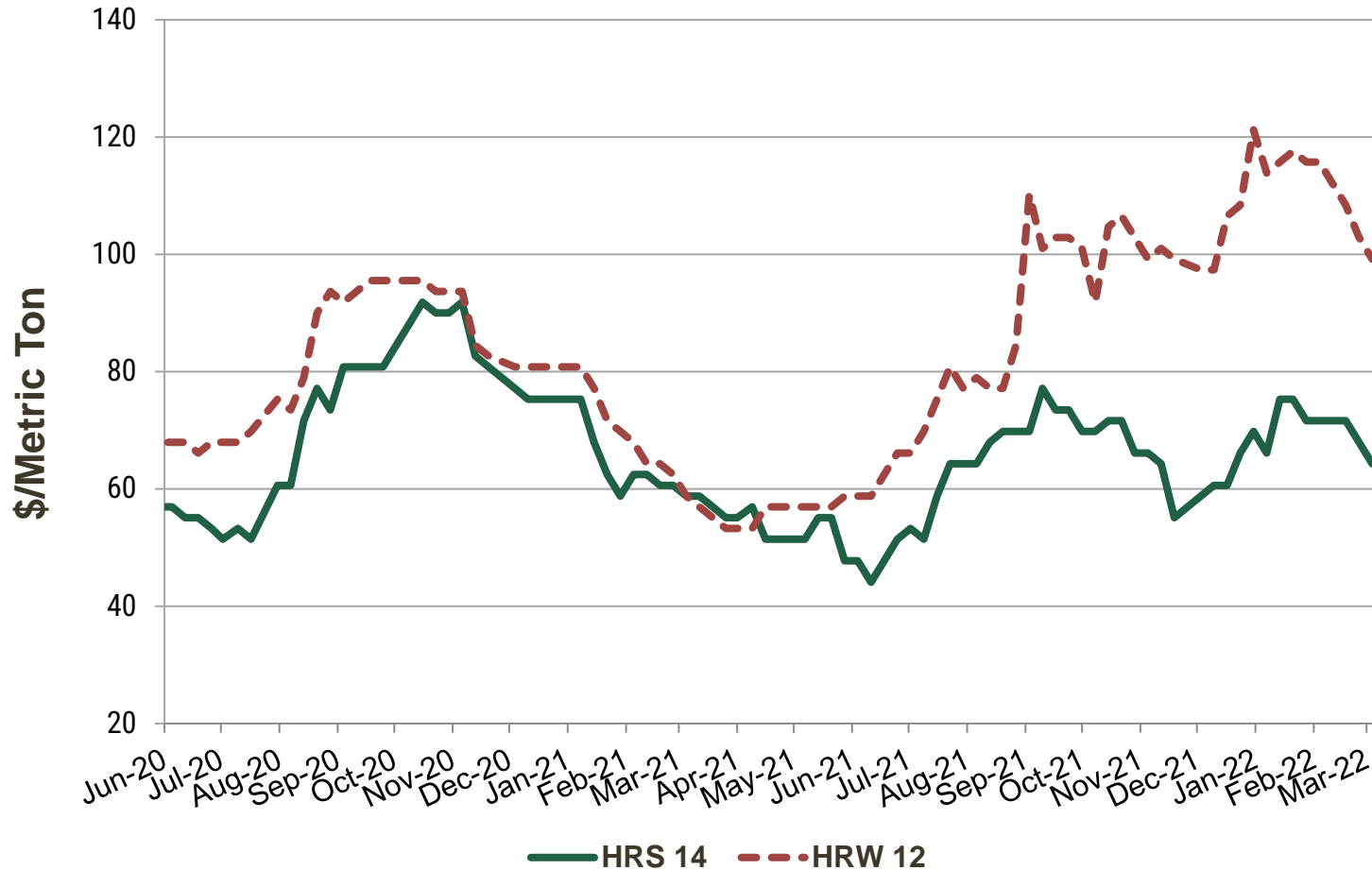
U.S. Gulf Export Basis



Source: U.S. Wheat Associates Price Report, March 4, 2022



U.S. PNW Export Basis



Source: U.S. Wheat Associates Price Report, March 4, 2022



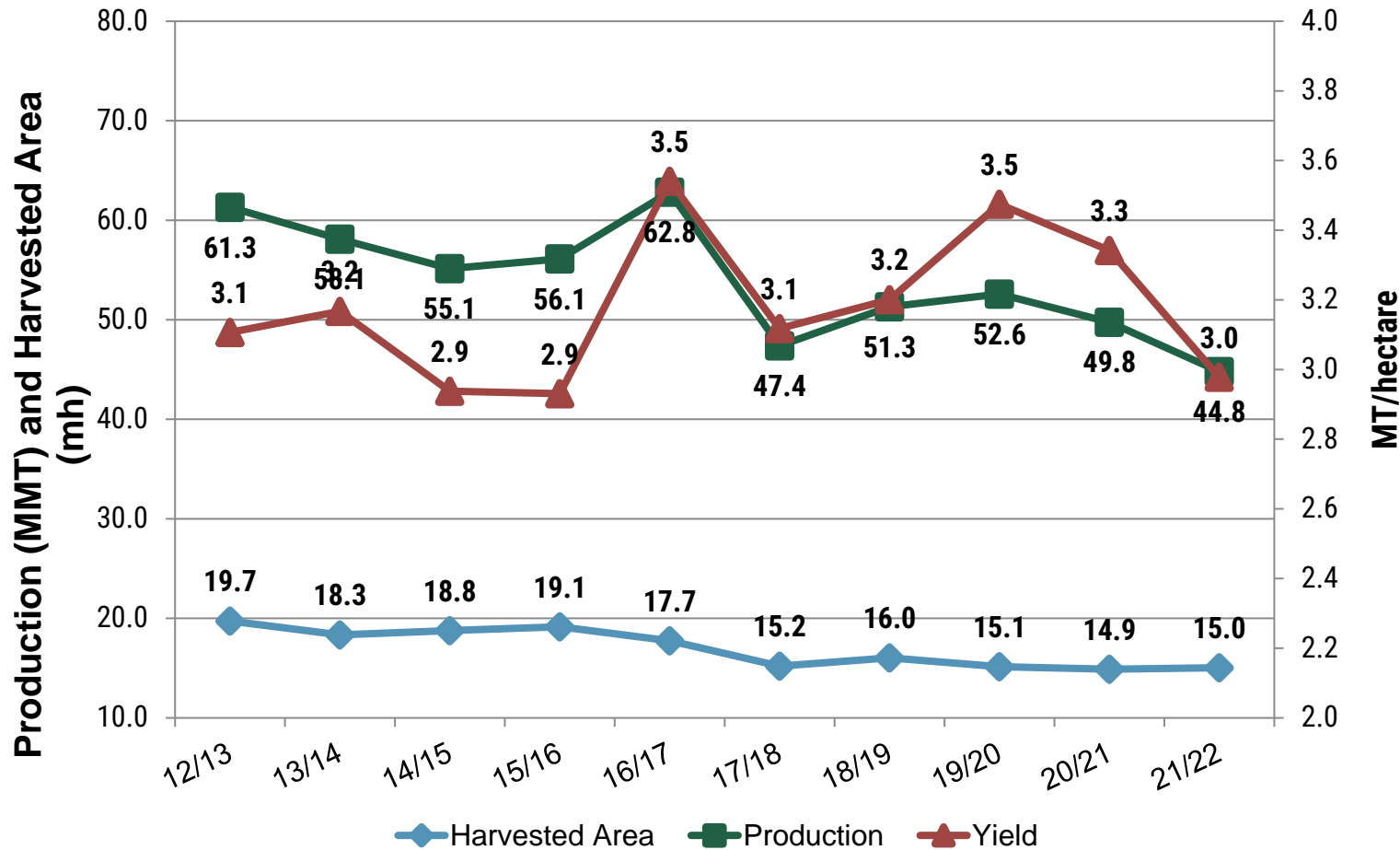


04

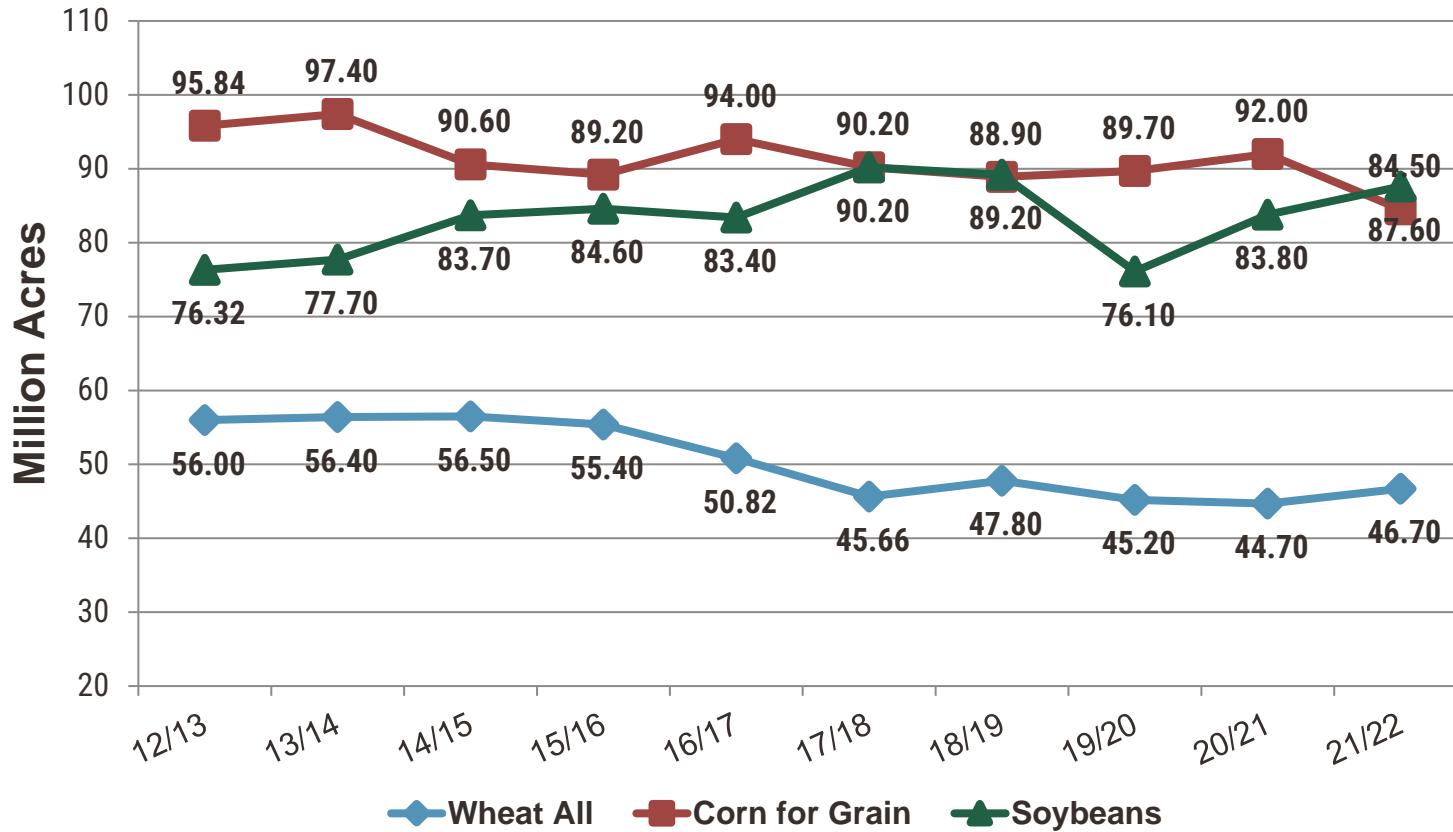
Outlook



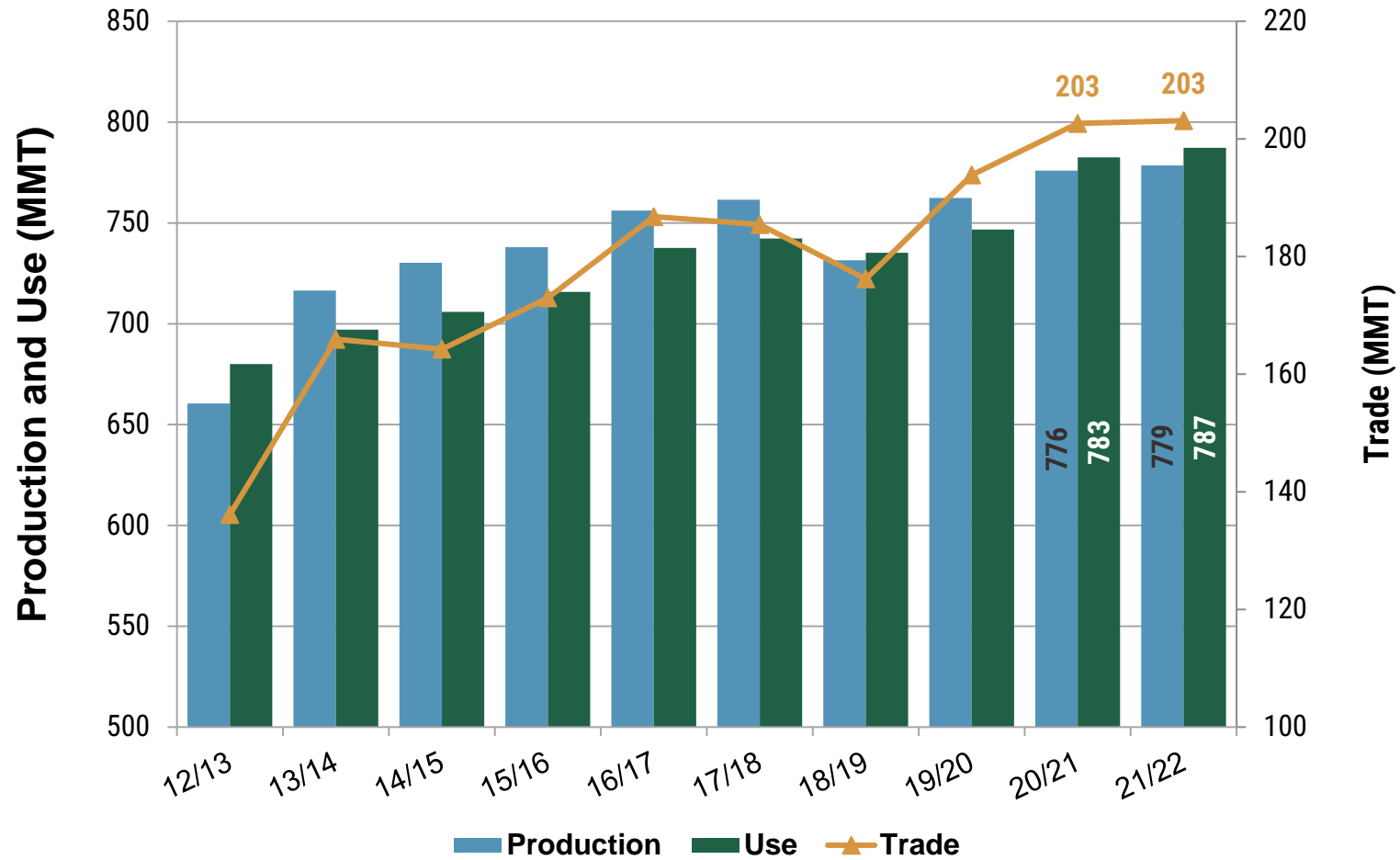
U.S. Wheat Production, Area and Yield



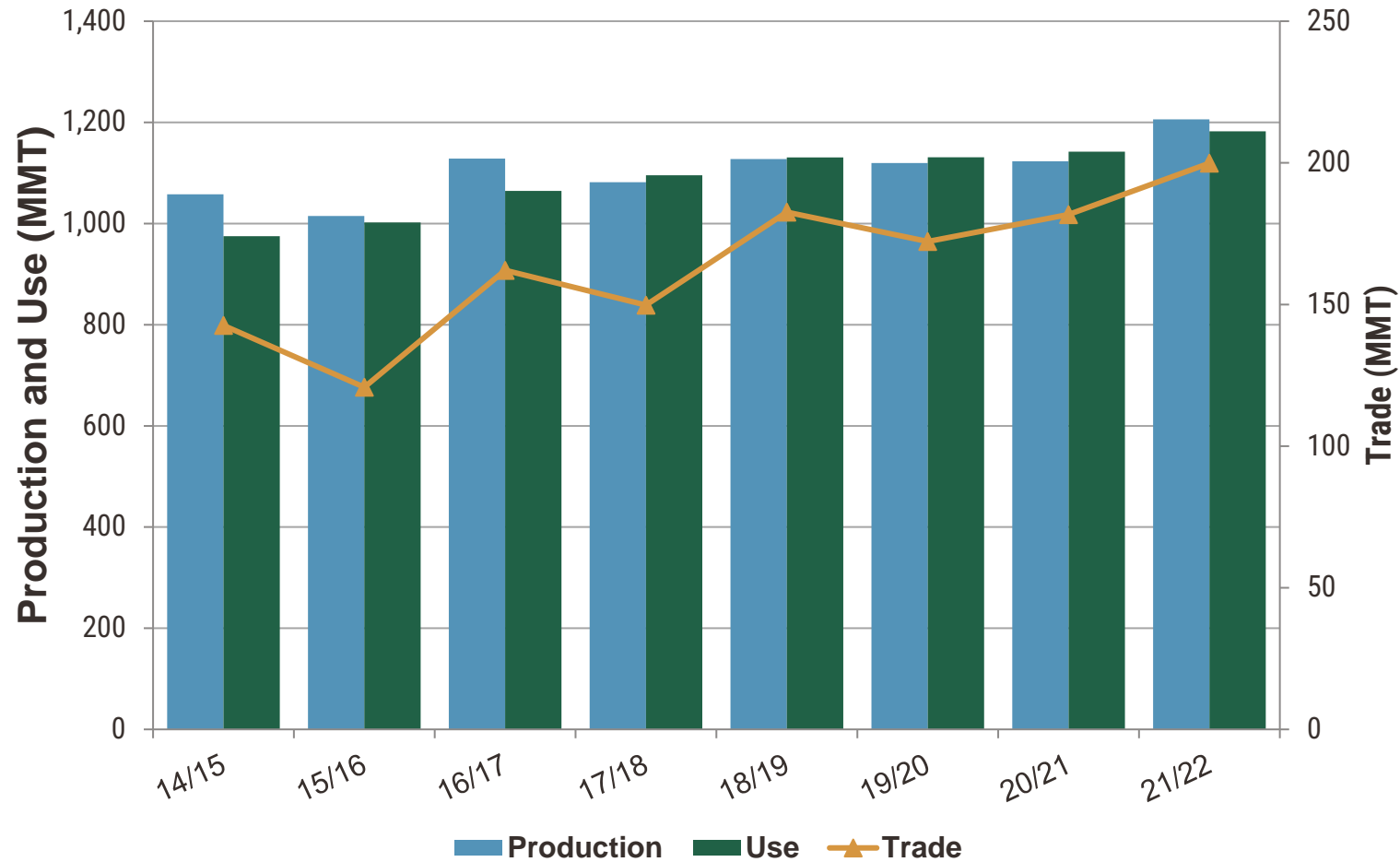
U.S. Crop Planted Area Comparison



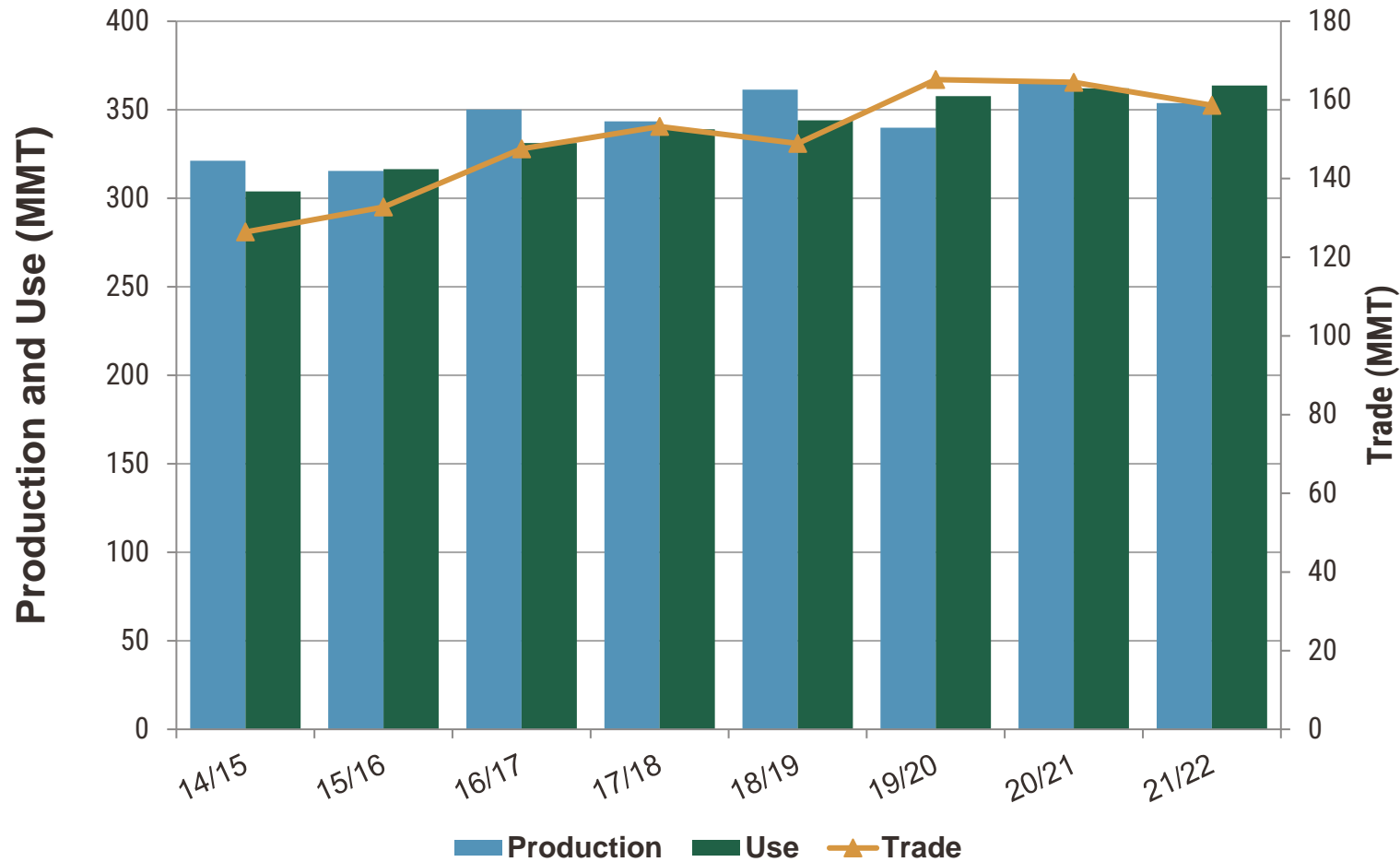
World Wheat Production, Use and Trade



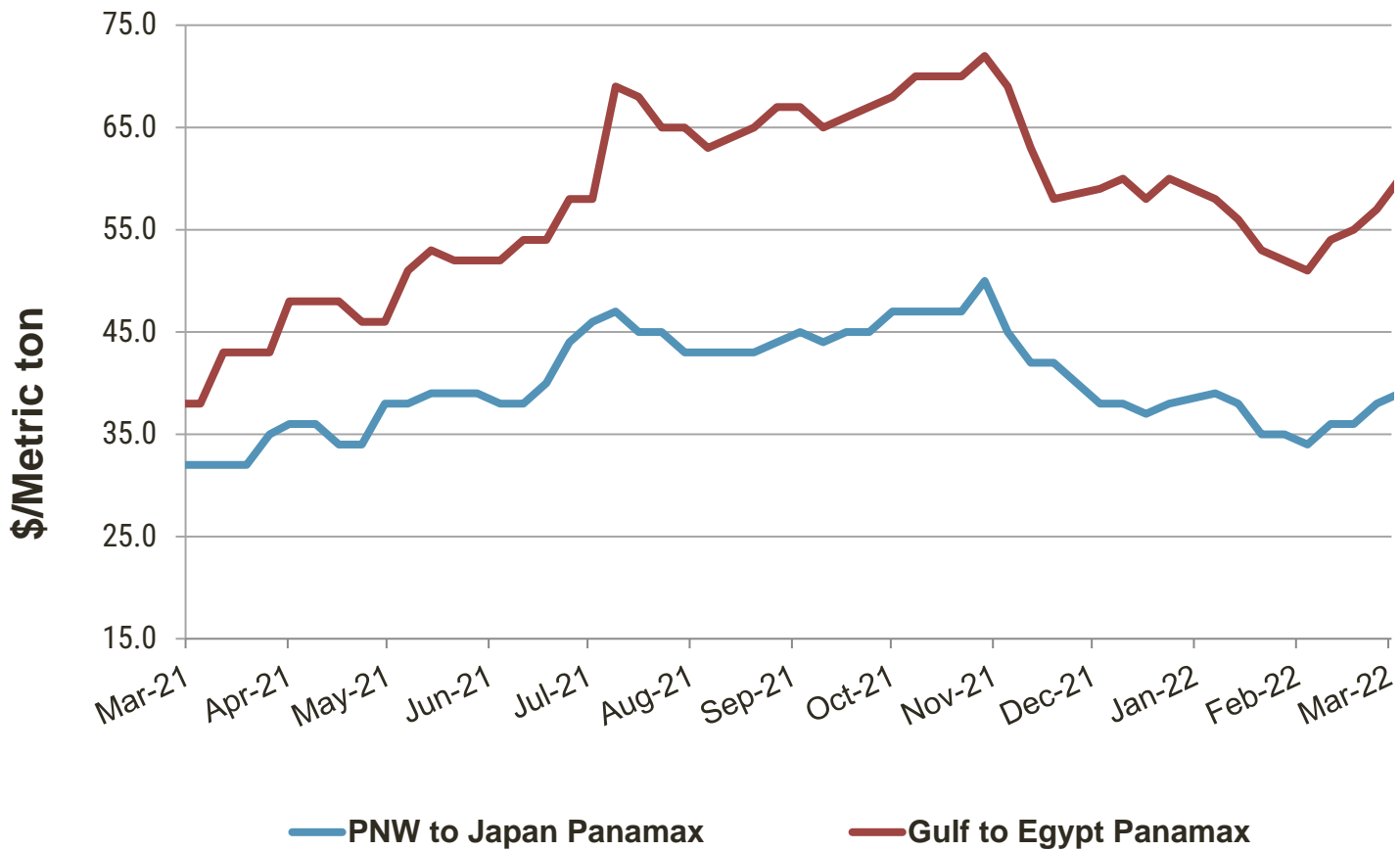
World Corn Production, Use and Trade



World Soybeans Production, Use and Trade



Ocean Freight Rates for Grains



Source: U.S. Wheat Associates Price Report, March 4, 2022



Highlights of USDA's 2021/22 Wheat S&D Estimates

USDA raises 2021/22 global production by 2.1 MMT to 778.5 MMT

- Production in China is forecast at 136.9 MMT, 3.3 MMT more than the 5-year average
- Production in North Africa is forecast at 21.5 MMT, 3.7 MMT more than the 5-year average
- Australian production is raised 2.3 MMT to 36.3 MMT
- U.S. production is unchanged from last month at 44.79 MMT, down 10% compared to 2020/21

Global consumption forecast at 787.28 MMT, 800,000 MT less than February

- Domestic consumption in India estimated at 103.5 MMT, down 750,000 MT compared to February
- Domestic consumption in North Africa estimated at 47.92 MMT, lower than last month while Middle East consumption was reduced 200,000 TMT from February to 39.6 MMT
- Ukraine is forecast at 9.6 MMT, up 1.0 MMT compared to February
- U.S. domestic consumption forecast at 30.84 MMT, unchanged from last month

Global consumption forecast at 787.28 MMT, 800,000 MT less than February

- Domestic consumption in India estimated at 103.5 MMT, down 750,000 MT compared to February
- Domestic consumption in Ukraine is forecast at 9.6 MMT, up 1.0 MMT compared to February
- U.S. domestic consumption forecast at 30.84 MMT, unchanged from last month



THANK YOU



**U.S. WHEAT
ASSOCIATES**

Dependable People. Reliable Wheat.